

SOMERSET COUNTY COUNCIL

SOMERSET COUNTY COUNCIL (OFF-STREET PARKING PLACES)
ORDER 2012 – AMENDMENT 1 (AXBRIDGE TOWN CAR PARKS - 2015)

Somerset County Council (herein after referred to as “the Council”) in exercise of its powers under Sections 32(1), 33(1), (2), (3), and 34, 35, 35A, 35C, 39 and Part IV of Schedule 9 of the Road Traffic Regulation Act 1984 (as amended) (herein after referred to as “the Act”) and in accordance with Part 6 of the Traffic Management Act 2004 of all other enabling powers and in accordance with the Local Authorities Traffic Orders (Procedure) (England & Wales) Regulations 1996 and after consultation with the Chief Officer of Police in accordance with Paragraph 20 of Schedule 9 to the Act, hereby makes the following order:-

1. Somerset County Council (Off-Street Parking Places) Order 2012, (hereinafter referred to as “the Order of 2012”) shall be amended as follows:-
 - a. Schedules 1 and 2 of the Order of 2012 shall be deleted in total and replaced with the revised schedules 1 and 2 as attached and set out below.
2. This Order shall come into operation on the 4th February 2016 and may be cited as Somerset County Council (Off-Street Parking Places) Order 2012 – Amendment 1 (Axbridge Town Car Parks - 2015).

Dated 29th January 2016

The COMMON SEAL of the)
COUNTY COUNCIL OF SOMERSET)
was hereunto affixed in the presence of:)



S. Veniston

Authorised signatory

No. in Register. 27654

STATEMENT OF REASONS FOR PROPOSING TO MAKE THE ORDER

For avoiding danger to persons, or other traffic using the road, or any other road, or for preventing the likelihood of any such danger arising.

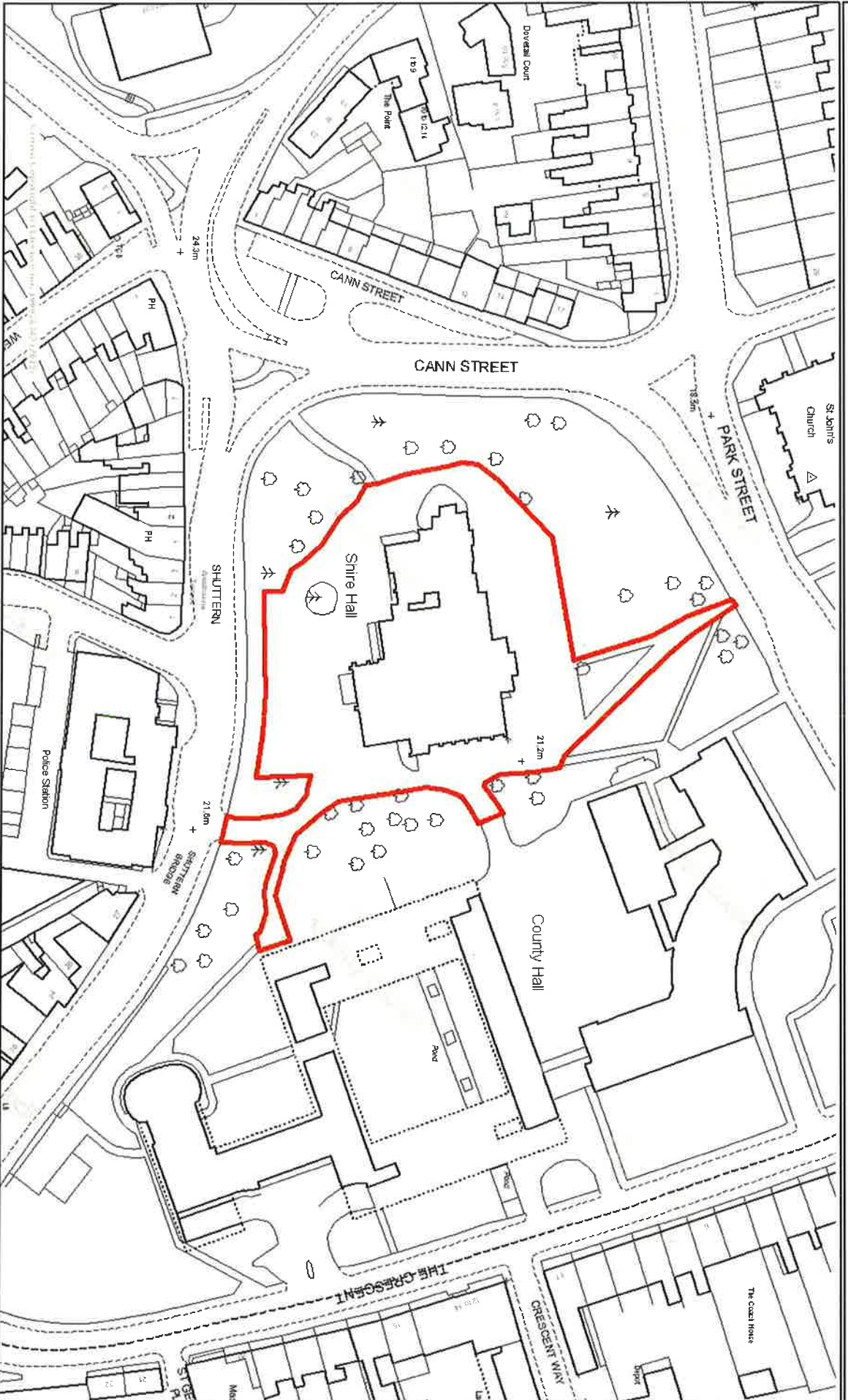
SCHEDULE 1

PLANS

List of Plans Attached to this Order

- (a) Shire Hall Car Park, Taunton**
- (b) County Hall Car Parks, Taunton**
- (c) Minehead Station Car Par, Minehead**
- (d) Rural Life Museum Car Park, Glastonbury**
- (e) B Block Reception Car Park, Taunton**
- (f) Penn Way Car Park, Axbridge**
- (g) Axbridge Town Car Park, Axbridge**
- (h) Moorland Street Car Park, Axbridge**

(a) Shire Hall Car Park, Taunton



© Crown Copyright and Database Right (2012).
Ordnance Survey 100038382

© SERC (2012) © GeoPerspectives

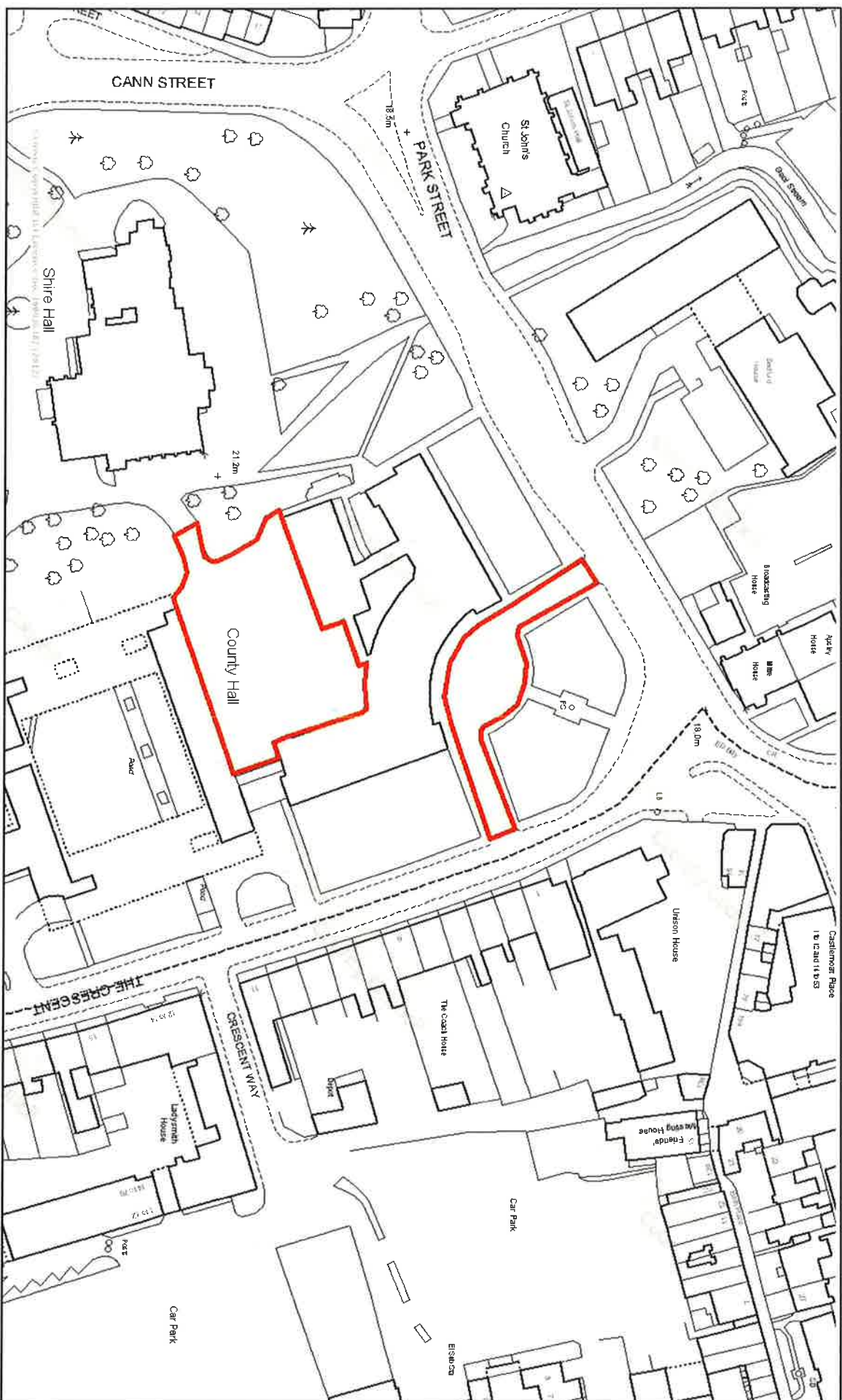
Date 6/8/2012

Scale 1/1250

Centre = 322399 E 124289 N



(b) County Hall Car Parks, Taunton



© Crown Copyright and Database Right (2012).
Ordnance Survey 100038382

© SERC (2012) © GeoPerspectives

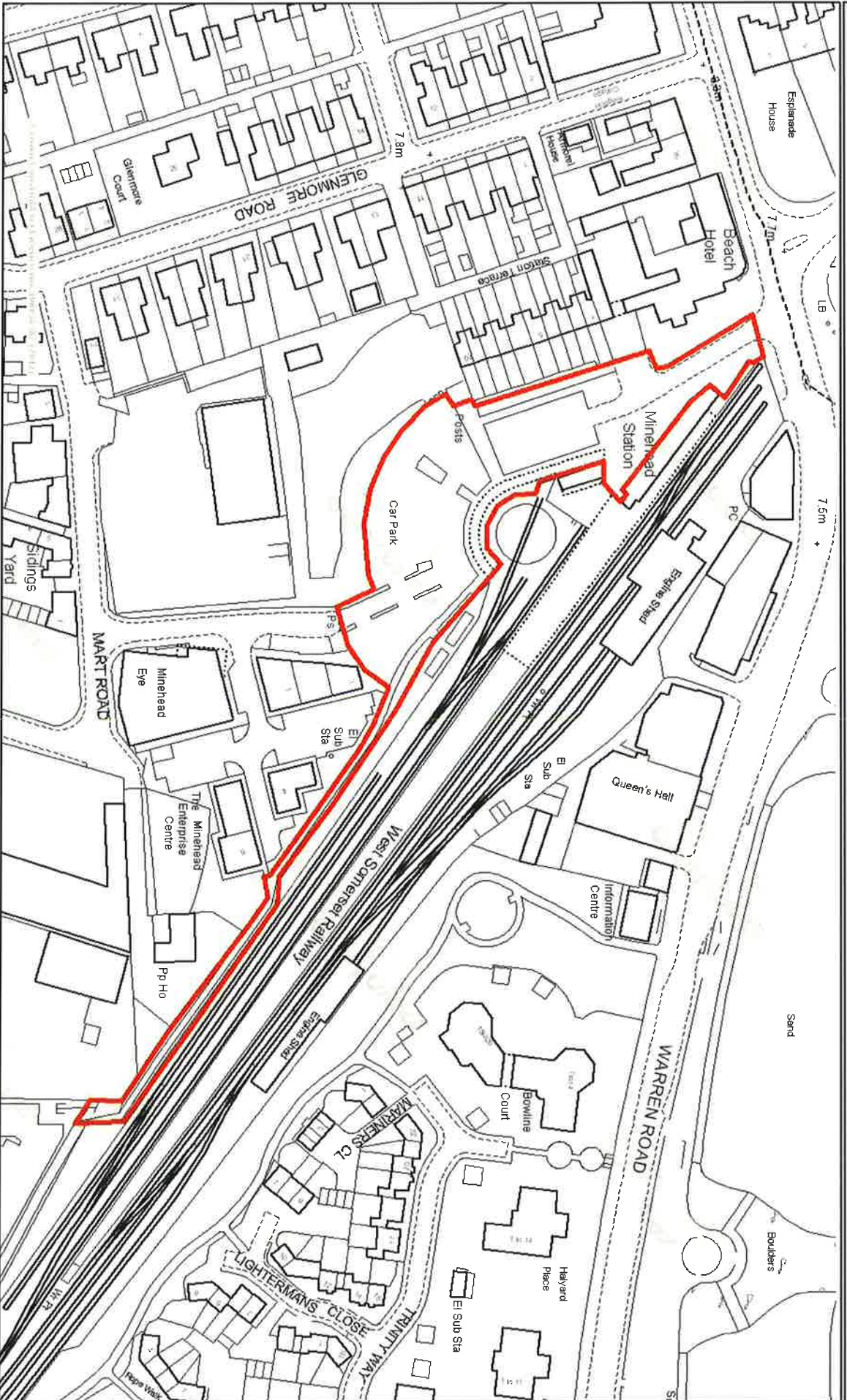
Date 24/7/2012

Scale 1/1250

Centre = 322468 E 124363 N



(c) Minehead Station Car Park, Minehead



© Crown Copyright and Database Right (2012).
Ordnance Survey 100038382

© SERC (2012) © GeoPerspectives

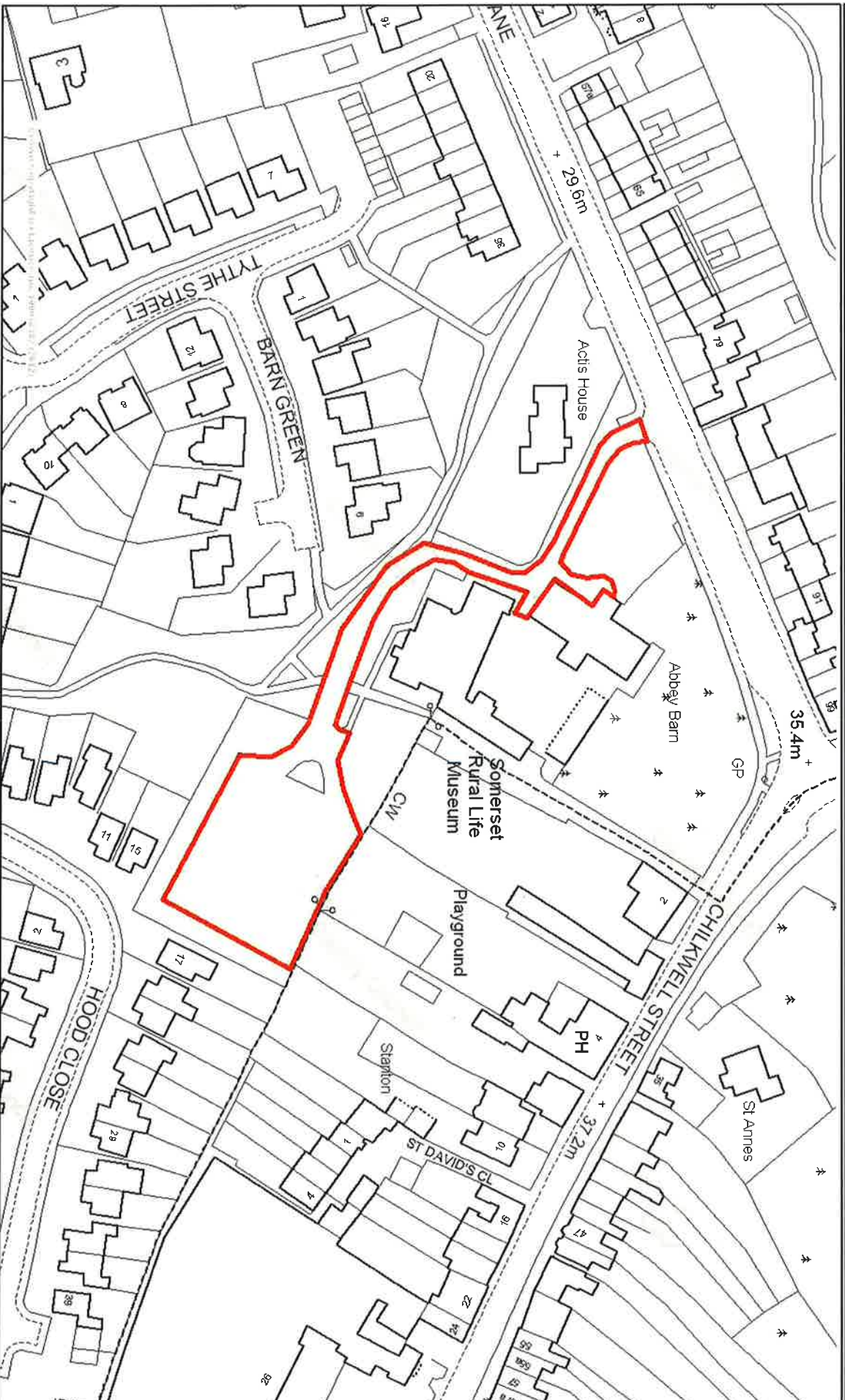
Date 13/8/2012

Scale 1/1750

Centre = 297536 E 146246 N



(d) Rural Life Museum Car Park, Glastonbury



© Crown Copyright and Database Right (2012).
Ordnance Survey 100038382

© SERC (2012) © GeoPerspectives

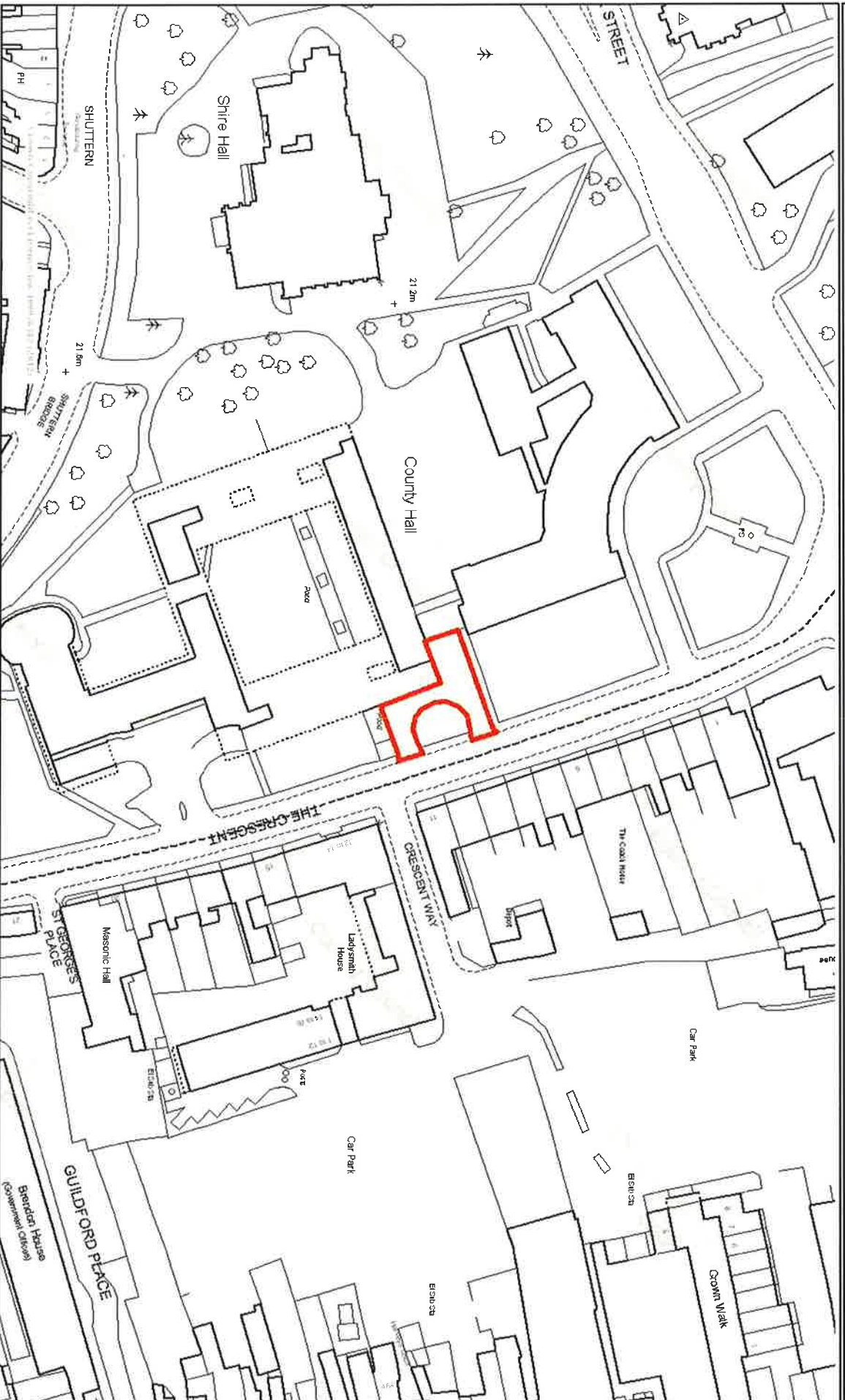
Date 6/8/2012

Scale 1/1250

Centre = 350384 E 138514 N



(e) B Block Reception Car Park, Taunton



© Crown Copyright and Database Right (2012).
Ordnance Survey 100038382

© SERC (2012) © GeoPerspectives

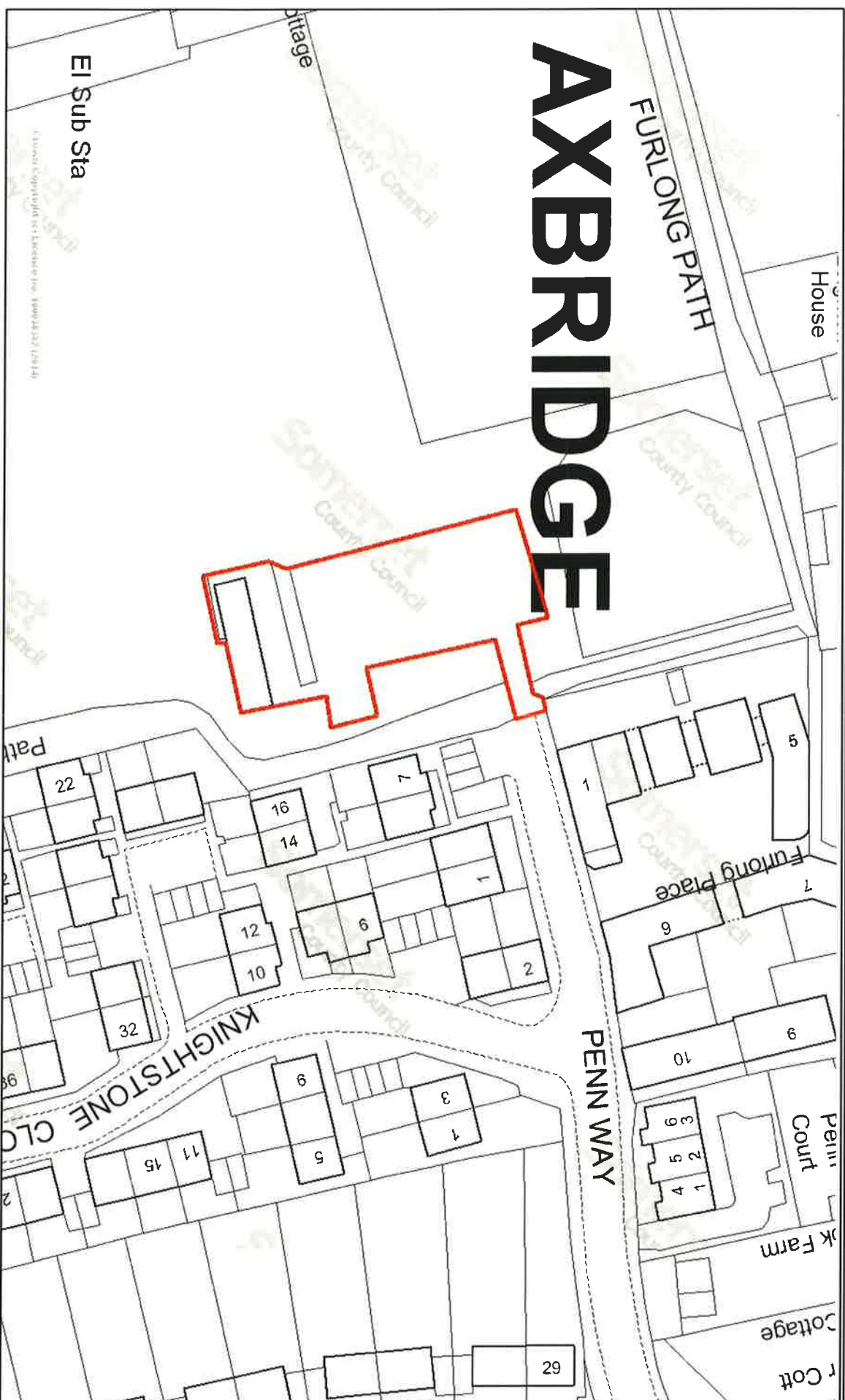
Date 25/7/2012

Scale 1/1250

Centre = 322508 E 124319 N



(f) Penn Way Car Park, AXBRIDGE



© Crown Copyright and Database Right (2014).

Ordinance Survey 100038382

© SERC (2012) © GeoPerspectives

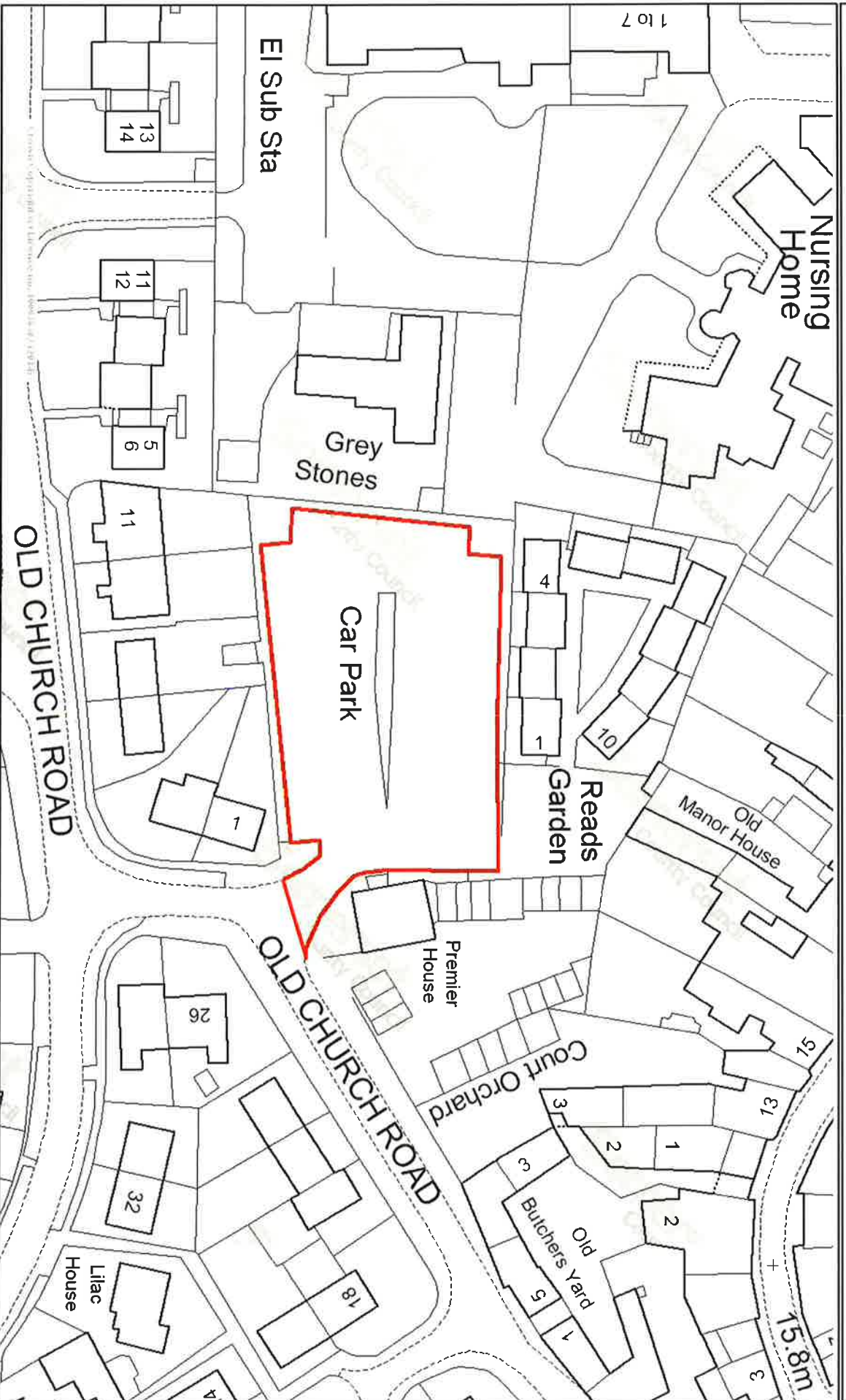
Date 19/5/2015

Scale 1/834

Centre = 343306 E 154413 N



(g) Axbridge Town Car Park



© Crown Copyright and Database Right (2014).
Ordnance Survey 100038382

© SERC (2012) © GeoPerspectives

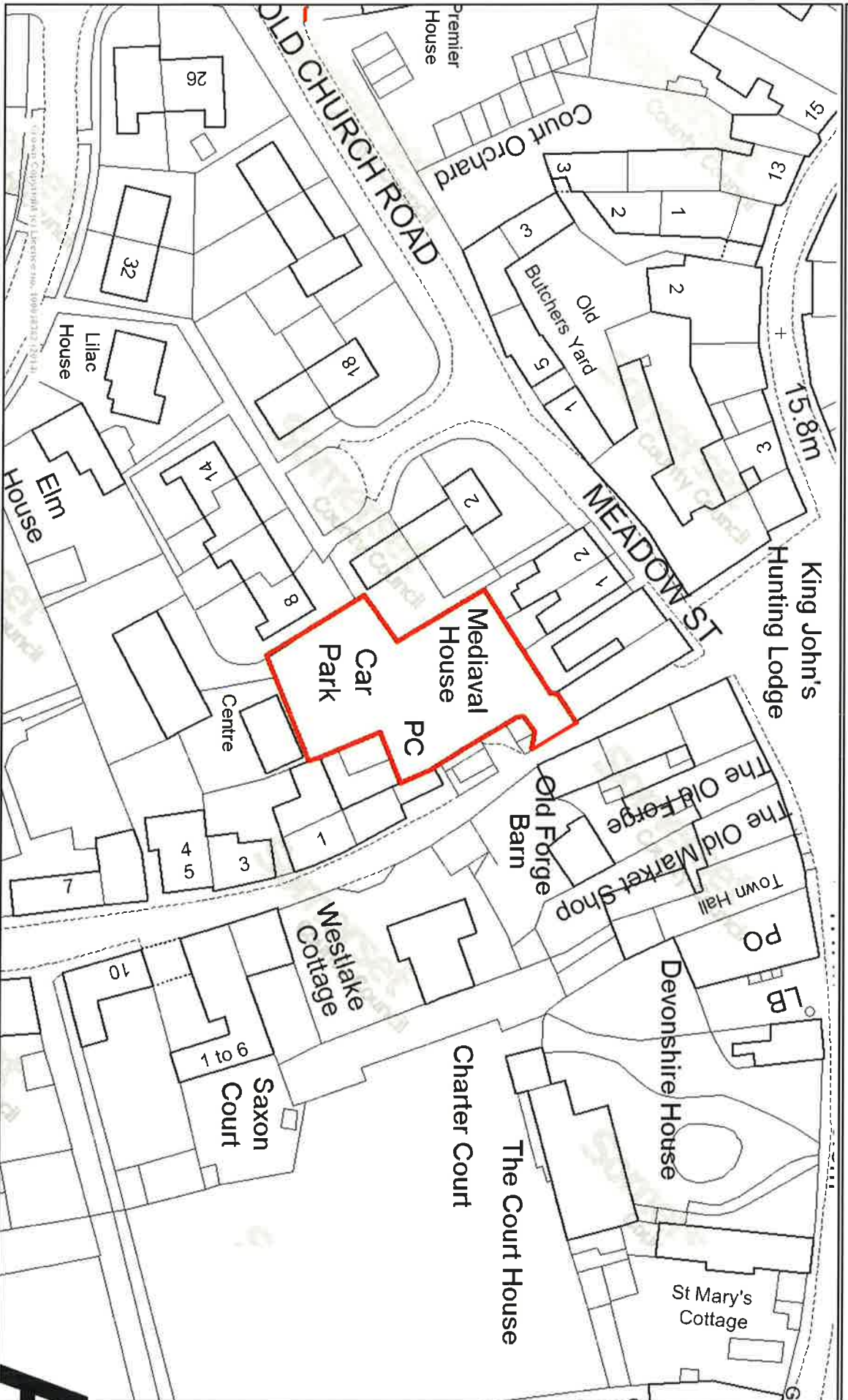
Date 19/6/2015

Scale 1/754

Centre = 342975 E 154489 N



Moorland Street, Car Park - AXBRIDGE



© Crown Copyright and Database Right (2014).
Ordnance Survey 100038382
© SERC (2012) © GeoPerspectives

Date 19/5/2015
Scale 1/736
Centre = 343107 E 154489 N



SCHEDULE 2

OFF STREET PAY AND DISPLAY SITES

1 Parking place(s).	2 Class(es) of vehicle permitted to wait.	3 Position(s) in which a vehicle must wait.	4 Days and hours of operation of parking place(s).	5 Maximum period for which a vehicle may wait.	6 Controlled hours and scale of charges.
(a) Shire Hall Car Park	Passenger vehicles, light goods vehicles, motor cycles and invalid carriages	Wholly within a marked bay, subject to the provisions of Article 3(b).	Saturdays all hours	No Limit No parking is permitted at any time on double yellow lines.	Saturdays 8:00am to 6:00pm Daily Charges Up to 1 hour - £1.10 Up to 2 hours - £1.80 Up to 3 hours - £2.10 Up to 4 hours - £2.60 Up to 5 hours - £3.70 Up to 6 hours - £4.40 Up to 7 hours - £5.20 Up to 10 hours - £5.90
(b) County Hall Car Parks	Passenger vehicles, light goods vehicles, motor cycles and invalid carriages	Wholly within a marked bay, subject to the provisions of Article 3(b).	Saturdays all hours	No Limit No parking is permitted at any time on double yellow lines.	Saturdays 8:00am to 6:00pm Daily Charges Up to 1 hour - £1.10 Up to 2 hours - £1.80 Up to 3 hours - £2.10 Up to 4 hours - £2.60 Up to 5 hours - £3.70 Up to 6 hours - £4.40 Up to 7 hours - £5.20 Up to 10 hours - £5.90

(c) Minehead Station Car Park	Passenger vehicles, light goods vehicles, motor cycles and invalid carriages	Wholly within a marked bay, subject to the provisions of Article 3(b).	All Days All Hours	No Limit No parking is permitted at any time on double yellow lines.	Mondays to Sundays (including bank holidays) 9:00am to 6:00pm Daily Charges Up to 1 hour - £1.50 Up to 2 hours - £2.60 Up to 4 hours - £4.20 All day - £5.70
(d) Rural Life Museum Car Park	Passenger vehicles, light goods vehicles, motor cycles and invalid carriages	Wholly within a marked bay, subject to the provisions of Article 3(b).	All Days All Hours	No Limit No parking is permitted at any time on double yellow lines.	Mondays to Sundays (including bank holidays) 9:00am to 5:30pm Daily Charges Up to 2 hours - £1.00 Over 2 hours - £2.00
(e) B Block Reception Car Park	Passenger vehicles, light goods vehicles, motor cycles and invalid carriages	Wholly within a marked bay, subject to the provisions of Article 3(b).	Saturdays all hours	No Limit No parking is permitted at any time on double yellow lines.	Saturdays 8:00am to 6:00pm Daily Charges Up to 1 hour - £1.10 Up to 2 hours - £1.80 Up to 3 hours - £2.10 Up to 4 hours - £2.60 Up to 5 hours - £3.70 Up to 6 hours - £4.40 Up to 7 hours - £5.20 Up to 10 hours - £5.90

(f) Penn Way Car Park, Axbridge	Passenger vehicles, light goods vehicles, motor cycles and invalid carriages	Wholly within a marked bay, subject to the provisions of Article 3(b). No parking is permitted at any time on double yellow lines.	Monday to Friday 9:00 to 18:00	4 Hours No return with 1 hour Permit Holders exempt from time limit	Monday to Friday 9:00 to 18:00 Daily Charges Up to 1 hour - Nil Up to 2 hours – Nil Up to 3 hours - Nil Up to 4 hours – Nil Permits – Nil
(g) Axbridge Town Car Park, Axbridge	Passenger vehicles, light goods vehicles, motor cycles and invalid carriages Vehicles over 3.5 tonnes, caravans, trailers may not park unless authorised by The Town Council	Wholly within a marked bay, subject to the provisions of Article 3(b). No parking is permitted at any time on double yellow lines.	Monday to Friday 9:00 to 18:00 (excluding public holidays)	18 Hours No return within 2 hours	Monday to Friday 9:00 to 18:00 Daily Charges Up to 1 hour - Nil Up to 2 hours – Nil Up to 4 hours - Nil Up to 24 hours - Nil
(h) Moorland Street Car Park, Axbridge	Passenger vehicles, light goods vehicles, motor cycles and invalid carriages	Wholly within a marked bay, subject to the provisions of Article 3(b). No parking is permitted at any time on double yellow lines.	Monday to Sunday 8:00 to 20:00	2 Hours No return within 1 hours	Monday to Sunday 8:00 to 20:00 Daily Charges Up to 1 hour - Nil Up to 2 hours – Nil