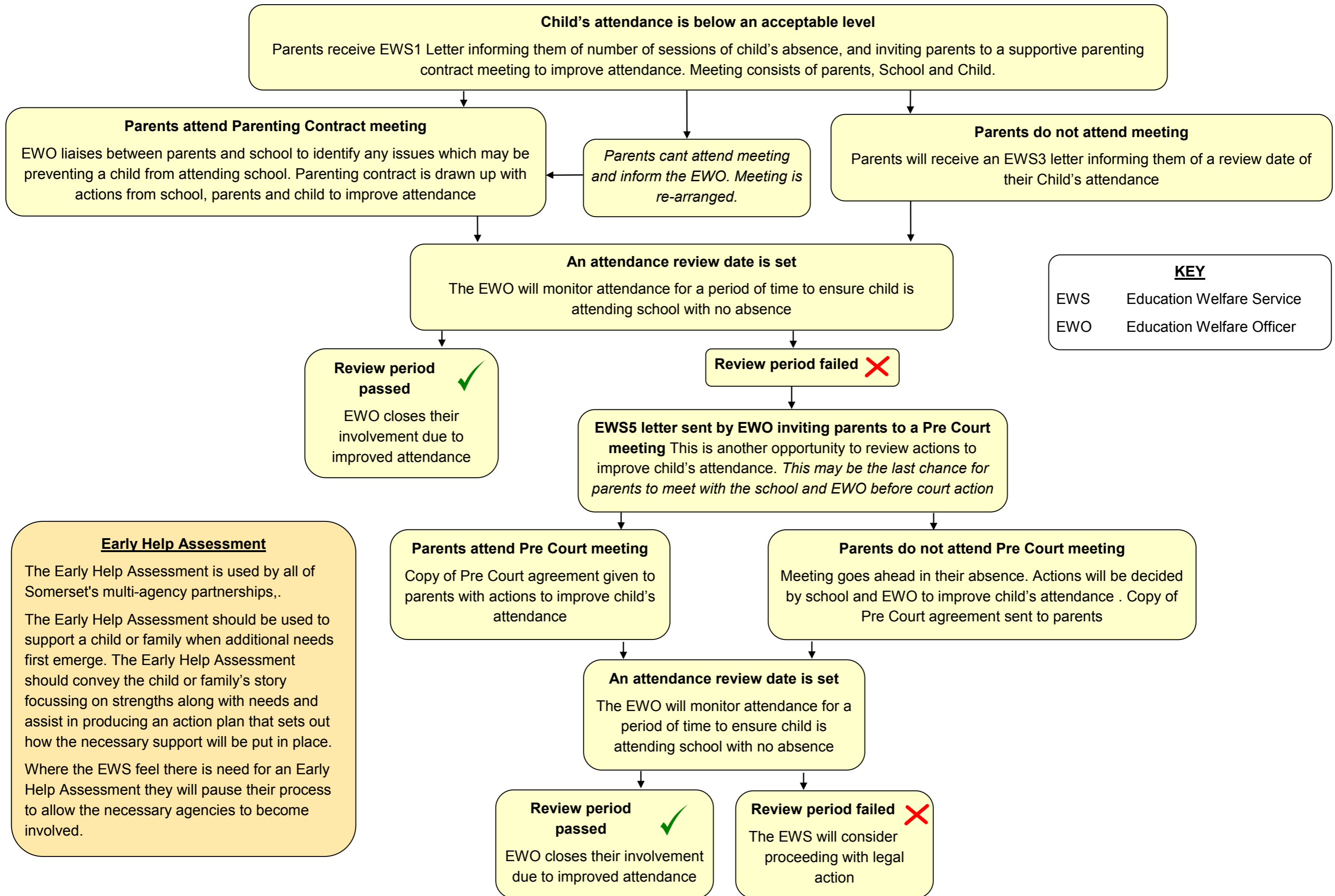


Education Welfare Service Casework Process



KEY

| | |
|-----|---------------------------|
| EWS | Education Welfare Service |
| EWO | Education Welfare Officer |

Early Help Assessment

The Early Help Assessment is used by all of Somerset's multi-agency partnerships. The Early Help Assessment should be used to support a child or family when additional needs first emerge. The Early Help Assessment should convey the child or family's story focussing on strengths along with needs and assist in producing an action plan that sets out how the necessary support will be put in place. Where the EWS feel there is need for an Early Help Assessment they will pause their process to allow the necessary agencies to become involved.