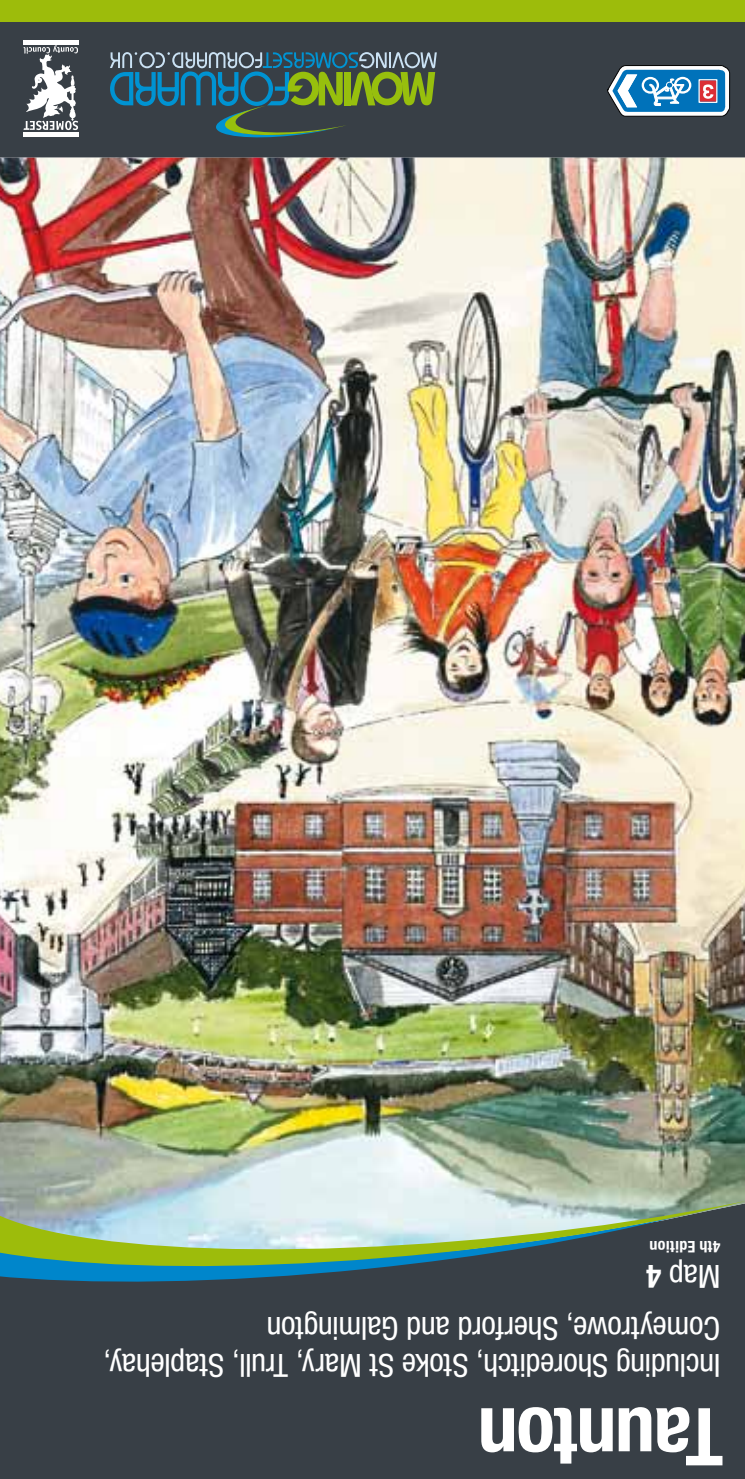


- |                          |         |  |                    |                          |                                    |                              |                        |  |                        |                             |                            |                                  |                   |         |             |           |                  |             |         |           |
|--------------------------|---------|--|--------------------|--------------------------|------------------------------------|------------------------------|------------------------|--|------------------------|-----------------------------|----------------------------|----------------------------------|-------------------|---------|-------------|-----------|------------------|-------------|---------|-----------|
| Busy sections on A roads | A roads | Link routes between settlements, signed cycle routes or places of interest | Signed cycle route | Traffic-free cycle path  | Cycle route not on public highway* | Bridleways (cycling allowed) | Footpaths (no cycling) | Railway line (and station)                 | On-carriage cycle lane | NCN / regional route number | Pelican crossing           | Toucan crossing                  | School            | College | Hospital    | Library   | Place of worship | Post office | Toilets | Bike shop |
| 100-150                  | 50-100  | 0-50   | Sand               | Contour height in metres | Bus station                        | Refreshments                 | Swimming pool          | Shopping centre, complex or trading estate | Farm shop              | Police station              | Tourist Information Centre | Places of interest (see reverse) | Historic building | Café    | Bike locker | Take care |                  |             |         |           |
- MOVING FORWARD**  
MOVINGSOMERSETFORWARD.CO.UK

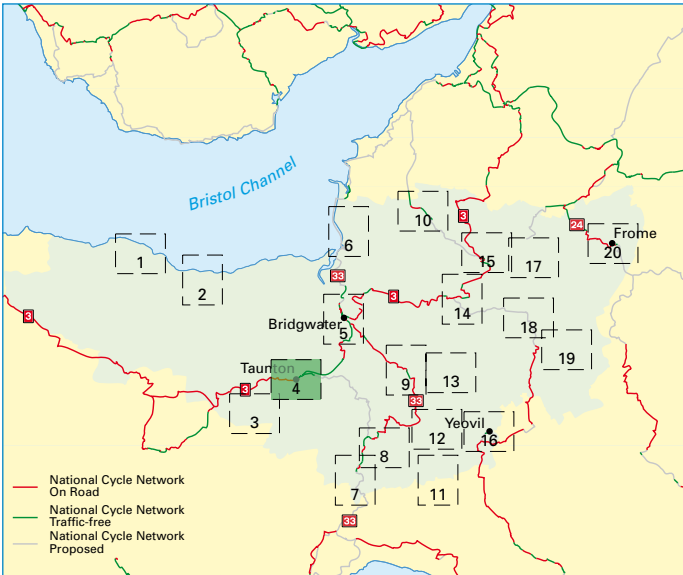




CYCLING AND WALKING IN SOMERSET

## 4 Taunton

This cycling and walking map is one of a series covering towns and villages throughout Somerset



### MAPS IN THE SOMERSET SERIES

- |                       |                         |                           |
|-----------------------|-------------------------|---------------------------|
| 1 Minehead & Dunster  | 2 Watchet & Williton    | 3 Wellington              |
| 4 Taunton             | 5 Bridgwater            | 6 Burnham & Highbridge    |
| 7 Chard               | 8 Ilminster             | 9 Langport & Ham          |
| 10 Cheddar & Axbridge | 11 Crewkerne            | 12 Martock & S. Petherton |
| 13 Somerton           | 14 Glastonbury & Street | 15 Wells                  |
| 16 Yeovil             | 17 Shepton Mallet       | 18 Castle Cary & Bruton   |
| 19 Wincanton          | 20 Frome                |                           |

## Somerset

From the Mendip Hills in the north, to the Quantocks in the west and the Blackdowns in the south, Somerset is a county of contrasting landscapes and moods, offering many attractions to visitors keen on exploring its rich heritage and delightful countryside.

For walkers and cyclists seeking a relaxing rural jaunt, the Somerset Levels are perfect touring country, with their meandering quiet lanes and hill-free landscape. These ancient wetlands, rich in wildlife, are home to one of Somerset's oldest traditional skills – willow basket weaving – an important craft for the production of a wide range of items from lobster pots to hot air balloon baskets!

For those who prefer the challenge of mountain biking and hill sports, the Quantocks, Mendips and Exmoor all provide exhilarating opportunities to test your stamina against the hills and discover some fantastic views.

For the historically minded visitor, the county is a positive treasure trove. There are dozens of fine old churches and historic towns and villages, such as Wells, with the gothic grandeur of its wonderful 12th-century cathedral and the nearby moated Bishop's Palace with its famous bell-ringing mute swans. Classic steam trains run along the West Somerset Railway, the UK's longest privately-owned passenger line, to the coastal towns of Watchet and Minehead.

For those with a love of myth and legend, Somerset can fascinate you with the legend of King Arthur. The Iron Age hill fort at South Cadbury is the alleged site of Camelot and at Glastonbury Abbey, the ancient monks claimed to have found the remains of this warrior and his queen, Gwynevere. At Athelney stands a monument to another monarch, King Alfred, reminding us of where he burnt the cakes.

There's so much more to Somerset than just its history. From donkeys on the beach to quaint shops in small towns, or wide open spaces with wildlife all around, there is something here for everyone – and it can all be seen best by bicycle or on foot.

[www.visitsomerset.co.uk](http://www.visitsomerset.co.uk)

## Taunton

Nestling in a valley at the foot of the Quantock and Blackdown Hills, Taunton, the County Town of Somerset, is steeped in history. It has found itself at the centre of many bloody battles, the most notorious of which was the Monmouth Rebellion in 1685.

Taunton hosts an array of splendid historic attractions including the 12th century Taunton Castle, which now houses the Somerset County Museum, the Church of St Mary Magdalene, with its impressive 163ft tower, and 'Tudor House', the oldest house in Taunton dating back to the 14th century.

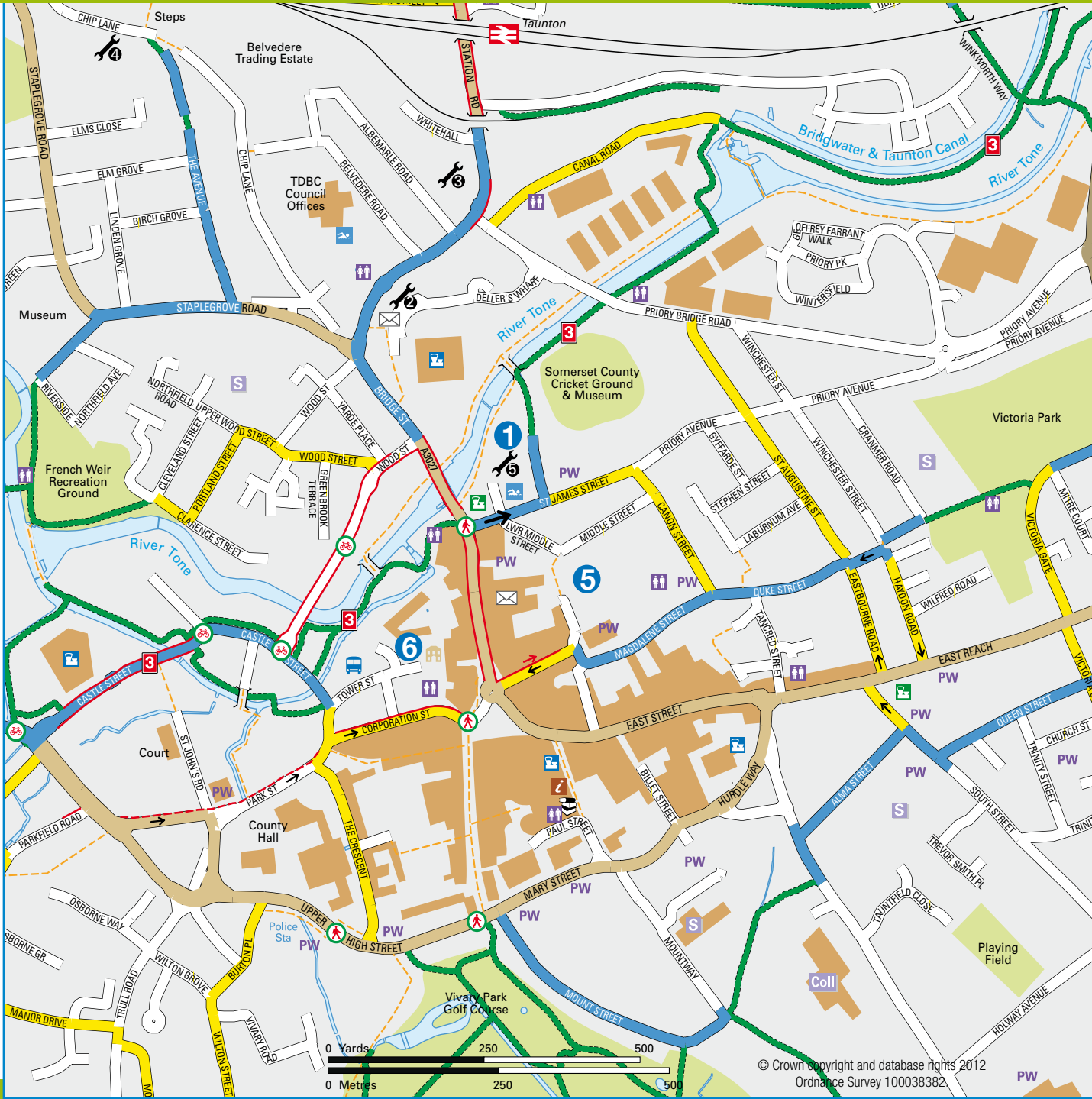
Although many of Taunton's Medieval and Tudor buildings were destroyed by fire, some of the era's gems remain. Many can be found by following the Taunton Heritage Trail, on which you can discover the numerous historical figures who lived here, including Wordsworth, Coleridge and Lord Trenchard, founding father of the RAF.

Taunton is also a modern centre of culture and entertainment. The Brewhouse Theatre and Arts Centre presents a wide programme of events while the town boasts an array of pubs, bistros, cafes and restaurants, in both modern and traditional styles, with an emphasis on fresh local produce. The banks of the River Tone, as well as the town's many floral parks and gardens, offer many opportunities for al fresco dining.

Taunton has an intriguing selection of specialist stores as well as high street names. Explore Bath Place, Riverside, The Old Market Centre and the Courtyard. You could also browse around Taunton's Antique Market with more than 130 dealers, or sample locally produced fresh fare from the surrounding farms at the weekly farmers' market held every Thursday.

There are some excellent circular cycle routes around Taunton, meandering into the Quantocks, along the Taunton to Bridgwater canal and beyond. For further information about local activities and events, including details of the spectacular annual flower show held in Vivary Park, contact the Tourist Information office or visit [www.visitsomerset.co.uk](http://www.visitsomerset.co.uk)

## Town centre



## Cycling advice

### GENERAL

- Always abide by road regulations and the Highway Code.
- Make sure your bike is well maintained and roadworthy.
- Be visible. You must use front and rear lights after dark and may wish to consider wearing reflective or bright clothing.
- Wear appropriate footwear and clothing and consider wearing a helmet.
- Carry a good-quality lock and make sure you secure your bike if leaving it.
- Cycle route signs are generally white on a blue background.

### RIDING ON THE ROAD

- Make sure you can start, stop, signal confidently with both hands and check behind without wobbling before riding on the road.
- Always ride within your own ability.
- Ride about 1m out from the kerb to avoid drains, litter and glass in the gutter and to make yourself more visible to following traffic.
- Think ahead and try not to make sudden moves or changes in direction. Anticipate obstacles and turns ahead and position yourself appropriately in good time. Act decisively and do not be afraid to assert your position on the road.
- Give way to pedestrians, wheel-chairs and horse riders.

Moving Forward is a Somerset County Council initiative aimed at reducing congestion and pollution in Somerset. By raising awareness and encouraging wider use of sustainable travel alternatives such as walking, cycling, car share and public transport, we can protect and improve our environment, our health and our quality of life.

Did you know that the majority of car trips are less than 2 miles? These days it's all too easy to just hop in the car without thinking, even when we're only popping round the corner. Walking or cycling some of these small journeys instead, even occasionally, would make a big difference. We hope this map will help you to explore some of the options suitable for you.

To find out about other ways you can improve your quality of life simply by making smarter choices about the way you travel, visit [www.movingsomersetforward.co.uk](http://www.movingsomersetforward.co.uk)



## Routes and symbols

	Motorway
	Local routes
	Signed cycle route
	Traffic-free cycle path
	Railway line (and station)
	NCN / regional route number
	School
	College
	Place of worship
	Post office
	Toilets
	Bus station
	Refreshments
	Cafe
	Places of interest
	Shopping centre, complex or trading estate
	Farm shop
	Hospital

### COMMENTS

These maps have been produced with advice from local cyclists, town/parish councils and other interested partners and will be continually reviewed and updated. We welcome any comments that may help improve the quality and information provided for future

editions. Please send comments and observations F.A.O. The Cycling Officer, Somerset County Council, C702, County Hall, Taunton TA1 4DY or email [movingforward@somerset.gov.uk](mailto:movingforward@somerset.gov.uk)

### REPORTING A PROBLEM ON A PUBLIC RIGHT OF WAY

If you find a problem on a public footpath or bridleway such as an obstruction, aggressive animal, missing signpost or damaged stile please telephone

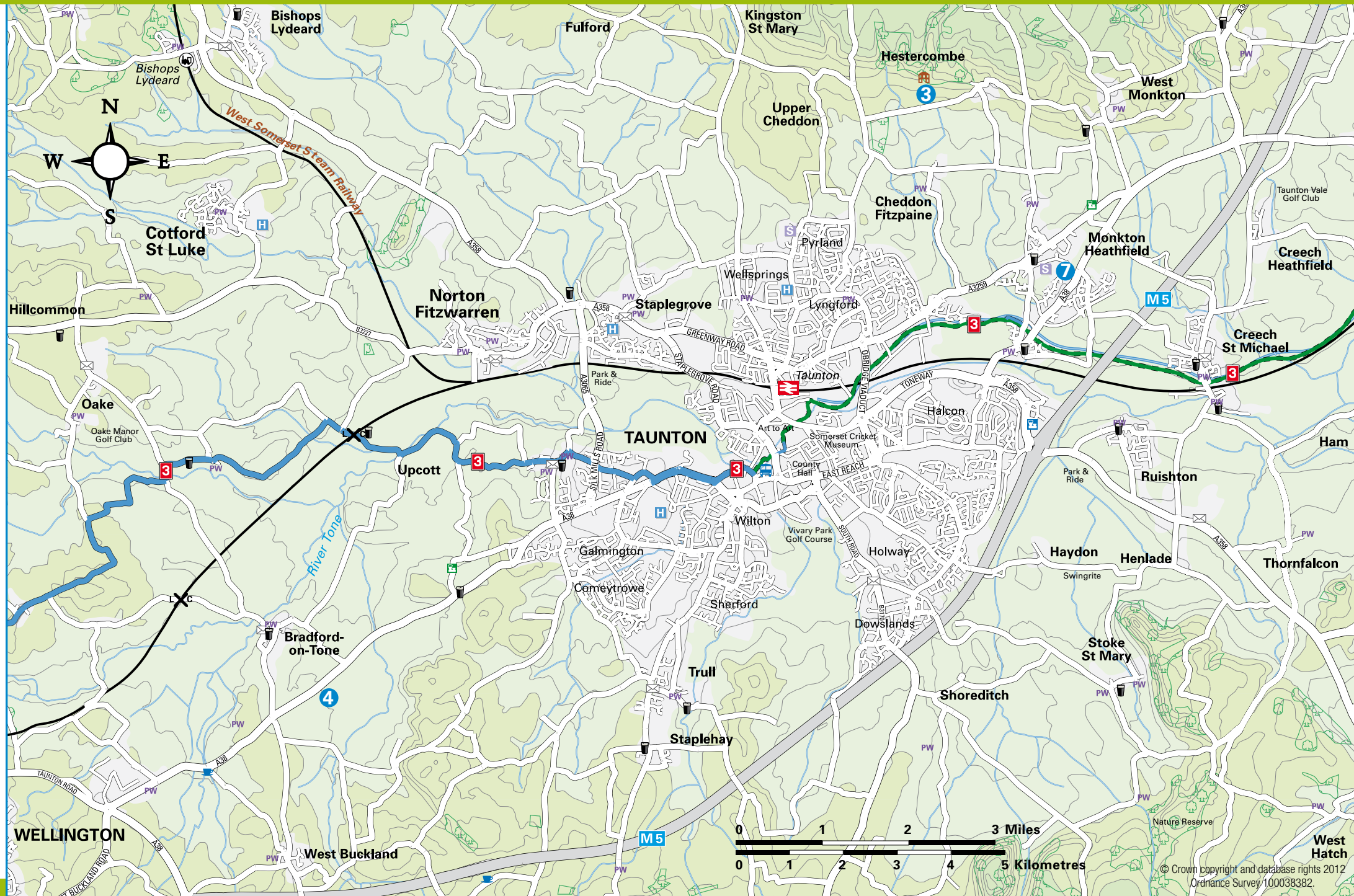
Somerset Direct on 0845 3459155 or visit [www.somerset.gov.uk/rightsofway](http://www.somerset.gov.uk/rightsofway), where you can inform us via the interactive mapping.

This map is published with the intention of providing information about the local road and cycle path networks. Every effort is made to ensure that all the information is up to date and accurate. Inclusion of marked routes on the map does not guarantee that these routes will be hazard-free. In particular, the routes marked in yellow indicate strategic routes linking settlements, marked cycle routes or other facilities and have been chosen according to a number of criteria which may make them more convenient to cyclists, including gradient, directness and typical traffic conditions. They do not indicate an enhanced level of maintenance or guaranteed safe conditions. In all cases, cyclists should

judge the suitability of the route in relation to the conditions at the time of use and their own cycling ability. Somerset County Council does not accept responsibility for any loss or damage that may occur resulting from the reliance upon this information.

**\*Routes that are not public highway**  
These routes (marked with dashed lines on key) are not dedicated as public highway. Somerset County Council has no responsibility for the maintenance, ease of access or condition of these paths and cannot accept any liability for any injury, loss or damage to any property arising from their use.

## Taunton and the surrounding area



## Useful information & places to go

### PLACES TO VISIT

- The Brewhouse Theatre & Arts Centre**  
Coal Orchard, TA1 1JL  
01823 283244  
[www.thebrewhouse.net](http://www.thebrewhouse.net)
- Fyne Court – National Trust**  
Broomfield, Bridgwater, TA5 2EQ  
01823 652400
- Hestercombe Gardens**  
Cheddon Fitzpaine, TA2 8LG  
01823 413923  
[www.hestercombe.com](http://www.hestercombe.com)
- Sheppy's Cider**  
Three Bridges, Bradford-on-Tone, TA4 1ER  
01823 461233  
[www.sheppycider.com](http://www.sheppycider.com)
- St Mary Magdalene Church**  
Church Square, TA1 1SA  
01823 272441
- The Museum of Somerset**  
Castle Green, TA1 4AA  
01823 320201
- Tacchi-Morris Arts Centre**  
School Road, TA2 8PD  
01823 414141  
[www.tacchi-morris.com](http://www.tacchi-morris.com)

### TOURIST INFORMATION

**Taunton TIC**  
Paul Street, Taunton, TA1 3XZ  
Tel: 01823 336344  
[tauntontic@tauntondean.gov.uk](mailto:tauntontic@tauntondean.gov.uk)

### BIKE SHOPS

- Ian's Cycle Centre**  
3a Roman Road, TA1 2BD  
01823 365917  
[www.ianscyclecentre.co.uk](http://www.ianscyclecentre.co.uk)
- King's Cycles**  
Station Road, TA1 1NL  
01823 352272  
[www.kingscycles.co.uk](http://www.kingscycles.co.uk)
- Ralph Colman Cycles**  
79 Station Road, TA1 1PB  
01823 275822
- The Bicycle Chain**  
Chip Lane, Staplegrave Road, TA1 1BZ  
01823 252499  
[www.bicyclechain.co.uk](http://www.bicyclechain.co.uk)
- Six Cycles**  
Unit 2, Pegasus Court, Coal Orchard, TA1 1AE  
01823 323130  
[www.sixcycles.co.uk](http://www.sixcycles.co.uk)

### POST OFFICES

**Mountfields PO**  
3 Mountfields Road, TA1 3BL  
01823 286397

**Taunton PO**  
38 North Street, TA1 1AB  
08457 223344

### LIBRARIES

**Taunton Library**  
Paul Street, TA1 3XZ  
Tel: 01823 336344  
[taulib@somerset.gov.uk](mailto:taulib@somerset.gov.uk)