

Voluntary Sector & Social Capital

Justin Sargent
Somerset Health & Well-Being
Conference
18th Oct 2016

Somerset Community Foundation

- Our vision for Somerset is a county of **vibrant, inclusive communities where voluntary organisations and social enterprises thrive**, transforming and enhancing the lives of the most disadvantaged people.
- Our mission is to be the **catalyst for inspirational philanthropy**, providing a simpler and more effective way for donors to make a lasting difference in Somerset through **community investment and thought leadership**.

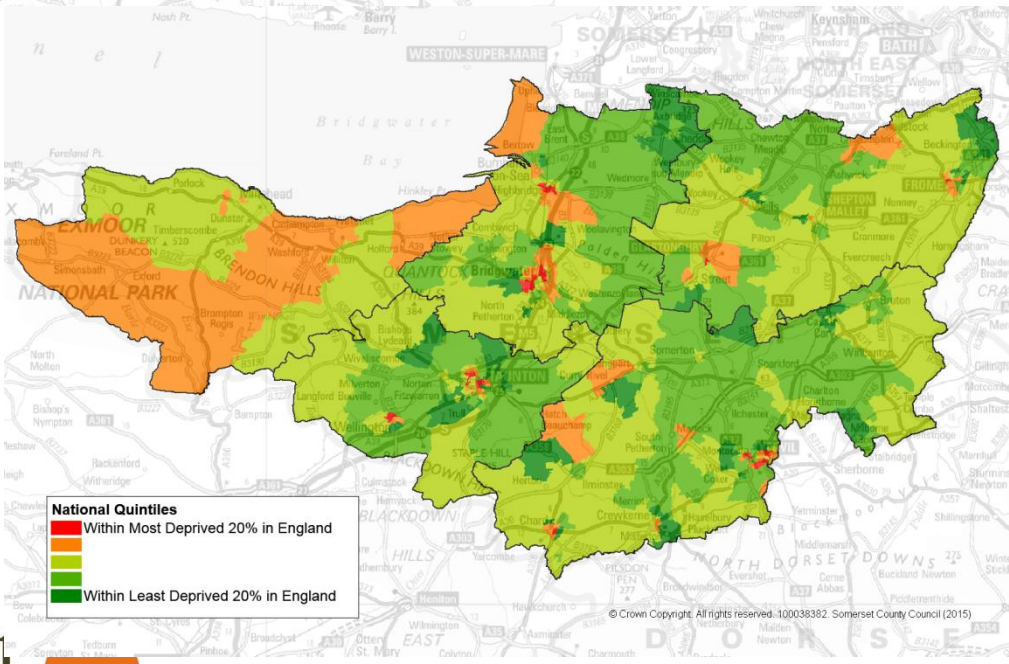
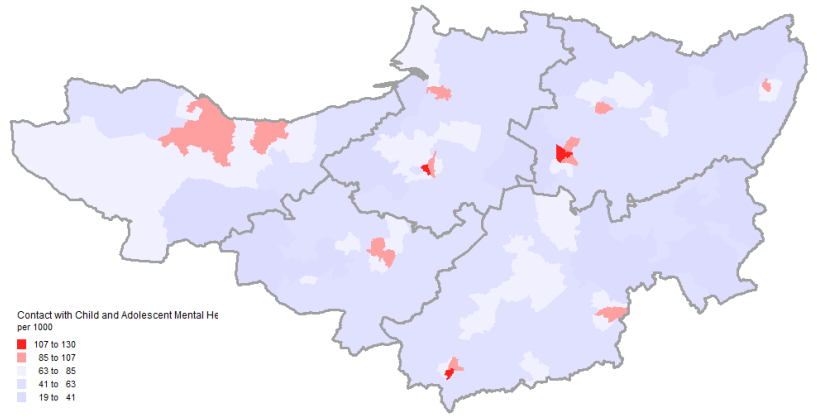
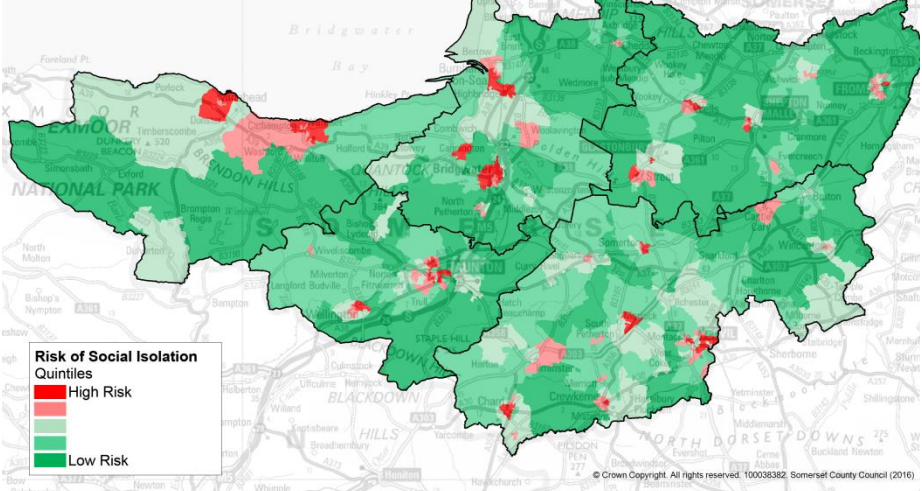




Do we have social capital
where we need it most?



Social Isolation vulnerability by LSOA

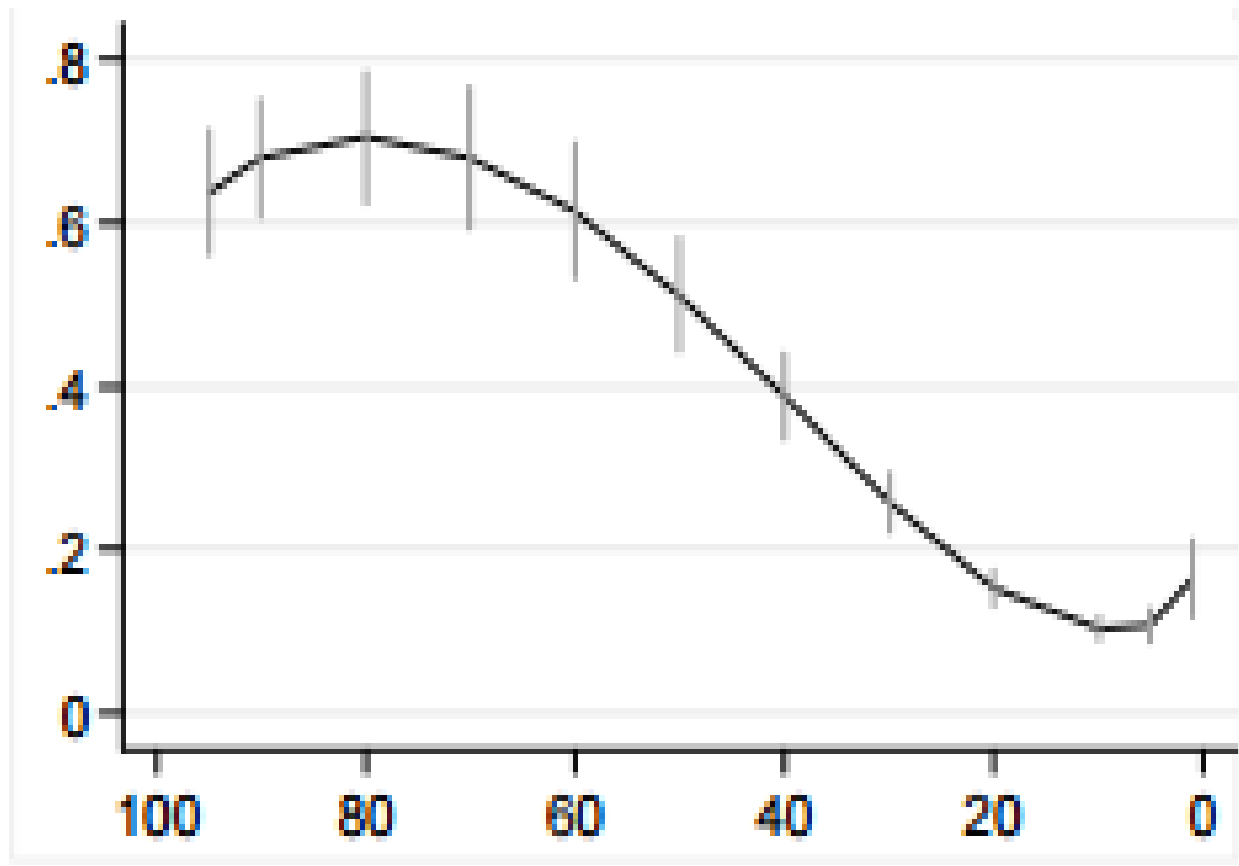


“Less deprived local areas have a much higher prevalence (of voluntary organisations) than more deprived local areas.”

Third Sector Research Centre Working Paper 65

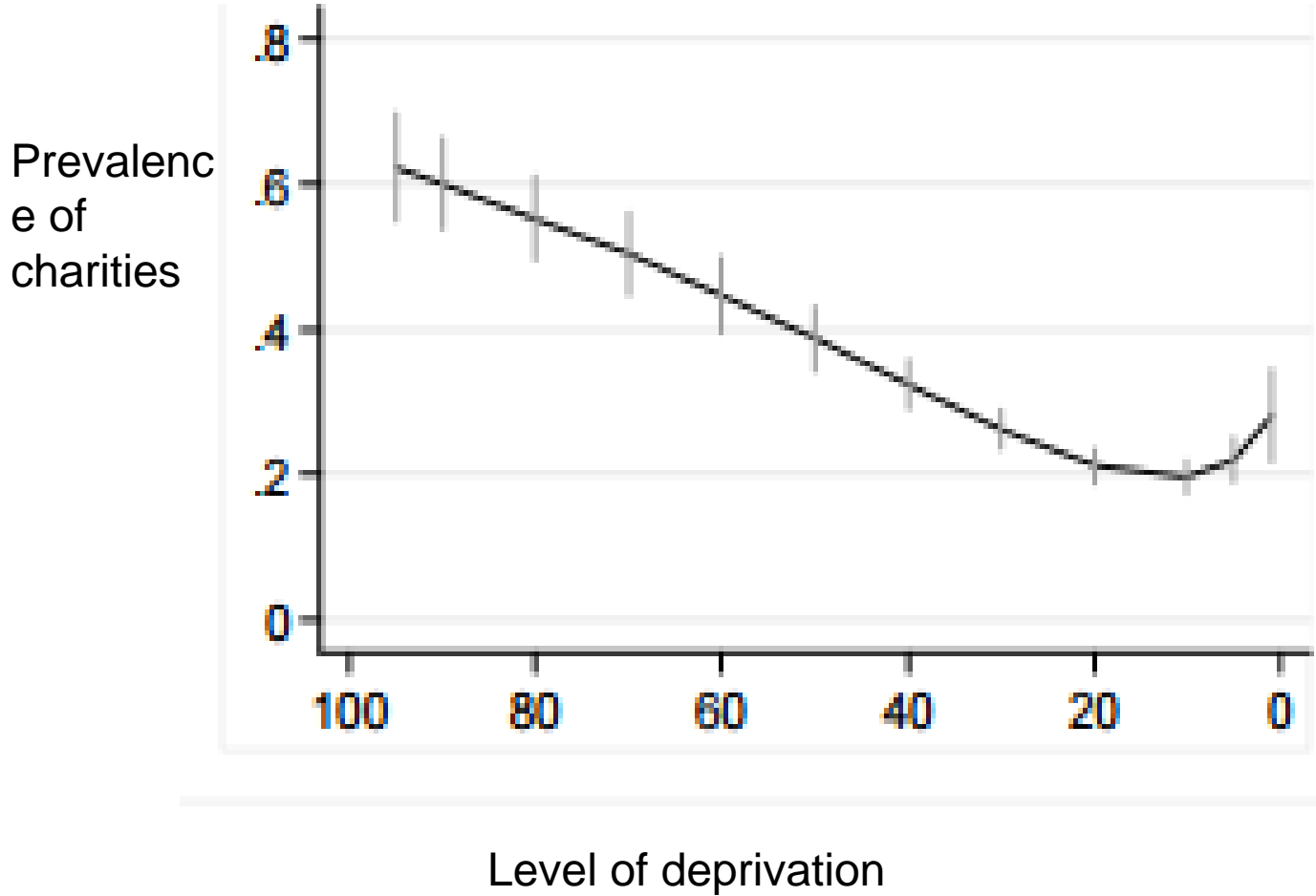
Charities income 1k – 10k pa

Prevalence of charities

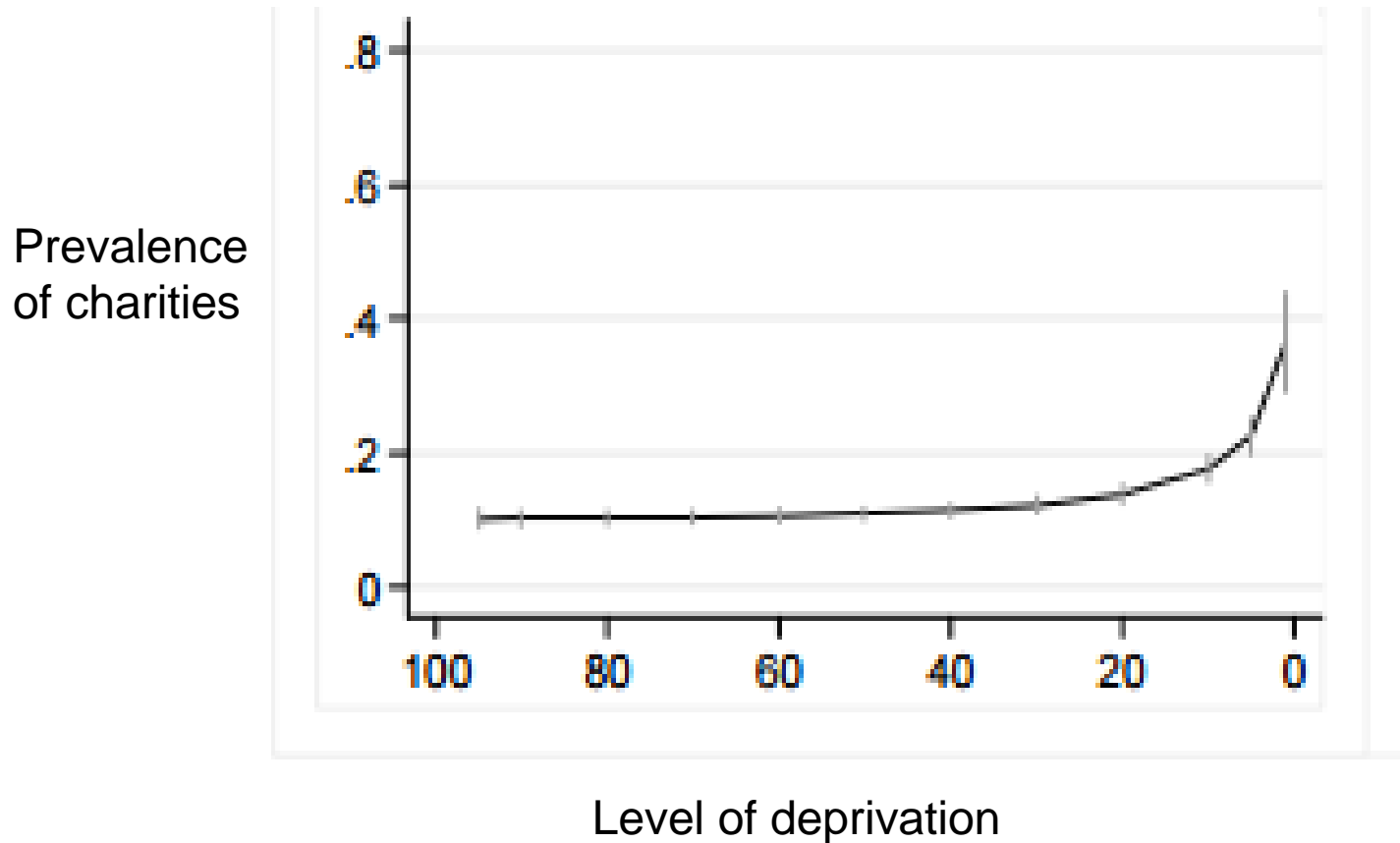


Level of deprivation

Charities income 10k – 100k pa



Charities income >100k pa



Inspiring Philanthropy



- Community investment
- Building effectiveness and efficiency
- Innovation/disruption





As for the future....



"I don't have any answers.
I'm a non-prophet."

