

[illegible]



Produced and funded by David Wilson Homes.

# Getting around... **Monkton Heathfield**



Welcome

**T**his leaflet has been funded by David Wilson Homes to inform you, as a resident in Aginshill Meadow, about the travel choices that are available to you from your home. (It may even help you to save money, the environment and time!)

Here you can find out about your options, including your entitlements, walking and cycling routes, bus and train journeys & working from home.

## Contents

	Page
• Introduction	1
• Walking	2
• Cycling	3
• Public Transport	4-6
• Maps	7-10
• Coaches	11
• Train	12
• Motorcycling	13
• Driving	14
• Reducing Travel	15
• Working from home	15
• Shopping	15
• Days out	17-18
• Further information	19





# Introduction

During the planning process of the Aginshill Meadow development, a Travel Plan was written to set out all of the travel options that are available to local residents and to make sustainable travel a more viable option for you and your neighbours. Each year the residents of Aginshill Meadow will be asked to take part in a questionnaire to see if you have been able to take advantage of these travel options.

**A more viable  
option for you and  
your neighbours.**

- Welcome Pack for residents of **Aginshill Meadow**;
- Green Travel Vouchers for new residents of **Aginshill Meadow**;
- Bus stop improvements
- Travel information notice board
- Car sharing scheme
- Cycle & motorcycle parking
- Installation of Automatic Traffic Counters at the site entrance to monitor numbers of trips in and out of the development;

**All of these elements will be in place by the time the development is completed.**



# How to get around... **Walking**



Walking is an excellent way to get around. It's free, reliable and a great way to help get fit.

**W**alking is an excellent way to get around. It's free, reliable and a great way to fit regular exercise into your daily routine, no matter what your age or level of fitness. It requires no specialist equipment other than a pair of comfy shoes.



\*You can use your **Green Travel Vouchers** to buy:

- Luggage/shopping trolleys
- Maps of local area (inc. UK road atlases)
- Nordic walking poles
- Raincoat
- Rucksack
- Shoes
- Torch (not batteries)
- Umbrellas
- Waterproof trousers

**Practical information about walking** in and from Monkton Heathfield.

There are a number of facilities and amenities located within the village of Monkton Heathfield and therefore within walking distance of the development. These include:

- Local shops
- Public Houses
- Primary School
- Secondary School
- Garden Centre
- Tacchi Morris Arts Centre

If you're able to **walk that bit further** you can access the following on foot:

- Hankridge Retail and Leisure Park
- Taunton High Street
- Blackbrook Pavilion

\* See pg 6 Green Travel Voucher

**How far in minutes from Aginshill Meadow**



# How to get around... **Cycling**



Many more people cycle to work in Somerset than in most other counties of the UK.

**S**omerset is a wonderful County for cycling. Many more people cycle to work in Somerset than in most other counties of the UK. It is a fantastic way to travel, being quicker than walking (and sometimes driving) and cheaper than running a car. It is a great leisure past time, as well as mode of commute, and has many health, environmental, social and financial benefits.



You also need to know about safety on the road, choosing and maintaining your bicycle or security. Talk to your Travel Plan

Co-ordinator about running some courses for you and your neighbours and any possible discounts they may have arranged with local bike shops on cycling equipment. Don't forget that your Green Travel Vouchers can be used against the purchase of some cycling equipment.

Places you might **consider cycling to...**



- Cinema & Bowling
- Sainsburys
- Taunton & all it has to offer
- County Hall
- Blackbrook Pavilion
- Tesco
- Taunton Train Station
- Bathpool Canal

**Bicycle shops** in Taunton:



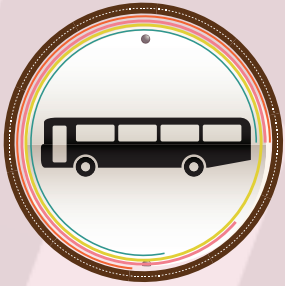
- Bicycle Chain - Chip Lane, Staplegrove Road, Taunton
- Ralph Coleman Cycle - 79 Station Road, Taunton
- Kings Cycles - 30 Station Road, Taunton

**Distance from Aginshill Meadow development in minutes.**





# How to get around... **Public Transport**



Public Transport can be a good option for travelling locally, avoiding traffic congestion and parking costs.



**S**omerset has a great public transport network. Travelling by rail, bus or coach can often be less stressful than sitting in heavy road traffic in your car, providing you with the opportunity to catch up on work or phone calls and just a chance to read or relax.

## **BUS**

There are many local bus services running across the County and within the Taunton Deane area especially. This can be a good option for travelling locally, avoiding traffic congestion and parking costs. Taunton now has two Park and Ride sites (one either side of the town) which have very regular buses in and out of town at a cost much less than a days parking.

Don't forget you can get discounts on bus travel with your Green Travel Vouchers (they can be used to buy season tickets from home but not individual tickets), over 60, a student or if you buy a County ticket.

Practical information about using the bus from Monkton Heathfield.

The **nearest bus stops** are located at:

- 1) Thornash Close, only a 3 minute walk from the Aginshill Meadow development.
- 2) Merry Monk, only a 2 minute walk from the Aginshill Meadow development.
- 3) Staddlestones, only a 2 minute walk from the Aginshill Meadow development.
- 4) The nearest Park and Ride service is located off J25 of the M5, only a 8 min drive or 12 min cycle.
- 5) The nearest Bus Station is Taunton Bus station, located off Tower Street, a 20 minute bus ride away.

### **Your local bus services and their main stops:**

#### **Service 29**

##### **Taunton - Wells**

(from Staddlestones - S Bound)  
Taunton - Othery - Glastonbury - Street - Wells.

#### **Service 12**

##### **Tonedale - Bridgwater**

(from Merry Monk - SW Bound).  
Tonedale - Wellington - Musgrove - Taunton - North Petherton - Bridgwater Estates.

#### **Service 15**

##### **Bridgwater - Rockwell Green**

(from Thornash Close - NE Bound)  
Bridgwater - Taunton - Wellington - Rockwell Green

#### **Service 21**

##### **Taunton - Burnham-on-Sea**

(from Thornash Close - NE Bound)

Taunton - Monkton Heathfield - North Petherton - Bridgwater - Dunball - Pawlett - Huntspill - Highbridge - Burnham-on-sea.

### **Other stops in the village are:**

Brittons Ash (N & SW bound)  
Heathfield School (W bound) &  
Hartnells Farm (NE & SW bound)



# Using mobile phone technology to find your next bus.

## Internet:

NextBuses is a mobile internet service which makes it possible to find bus times on your mobile internet enabled phone (iPhone, Android and Windows Phone apps are also available). It allows you to select a bus stop close to where you are in Scotland, England or Wales and for that bus stop find the next bus times. Scheduled bus times are shown if live times are not available. Normal data charges from your mobile phone operator apply. Speed and access to the service is subject to your network connection. ([www.nextbuses.mobi](http://www.nextbuses.mobi)).

## Text:

You can also check the next buses from a particular bus stop by sending the bus stop code in a text to **84268**. The bus stop code may be displayed on the bus stop flag or in the timetable case. If the stop is a busy one, then you can also add the service number you want (leaving a space after the stop code)... so your message might look like "sotdtdpt 3". You will receive a message back, normally in less than a minute. Typically the message will show a clock time if the information comes from timetables (e.g.: 0935) but it will show an expected waiting time (e.g.: 5 mins) if it comes from a real-time information system. Remember the service is specific to an individual stop for travel in that one direction... the code for the stop in the other direction will be different! The message you send will cost your normal text message charge. In some areas the reply will be free of charge. In most areas the reply will cost up to 25p.

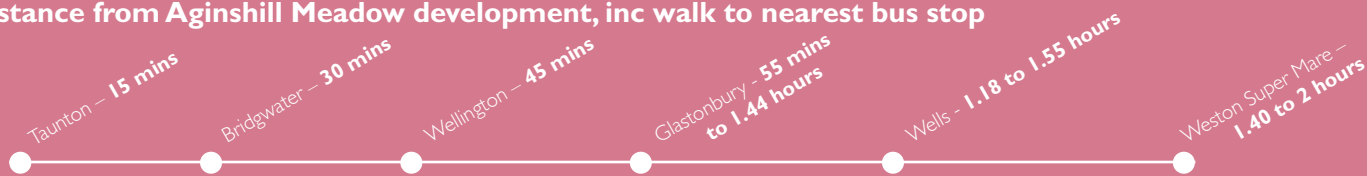
## The bus stop codes:

- Thornash Close, sotajwdw (NE Bound).
- Merrymonk, sotajwdg (SW Bound)
- Staddlestones, sotajwaw/sotajwap

## Getting on the bus:

- Find the right bus stop.
- Stopping the bus – check the route number and destination on the front of the bus as it approaches. Raise your arm to show the driver that you want it to stop – it may not otherwise.
- Buy your ticket on the bus – choose from a single, return or day ticket for your journey. Quite often day tickets are the cheapest if you are doing two or more journeys that day. Generally a return ticket is the price of 2 singles – unlike the train. Having the correct fare will help the driver who may not have much change. Season tickets may be the cheapest option if you intend to use the bus a lot for your daily commute (these need to be purchased from the bus station or online).
- Getting off the bus – press the bell once in advance of the stop where you want to get off, giving the driver enough time to slow down and stop. Ask the driver for help if you are unsure where to get off the first time. It helps to know how long your journey is supposed to be so that you know roughly how long you should be on the bus for.
- Attached to your Welcome Pack is a GREEN TRAVEL VOUCHER. The Green Travel Voucher enables residents of Aginshill Meadow to be reimbursed up to 50% of the cost of purchase of items associated with sustainable transport. Alternatively, you can use this voucher to claim a FREE Bus Season Ticket for First Services in the Somerset area. If you choose this option, we will arrange for you to be issued with the appropriate tickets based on your property size.

## Distance from Aginshill Meadow development, inc walk to nearest bus stop







**Quite often day tickets are the cheapest if you are doing two or more journeys that day.**

#### **\* Green Travel Vouchers**

*Each new household at Aginshill Meadow is offered the Green Travel Voucher. This voucher allows you to claim 50% of your expenditure (up to a set amount) for items associated with sustainable transport, which are listed on the reverse of your voucher such as bicycle and/or cycling equipment. All you need to do is fill in the application form on the back of the voucher and return it to your Travel Plan Coordinator to claim your expenditure for items associated with sustainable transport. Please see the voucher for terms and conditions.*

# Taunton Map



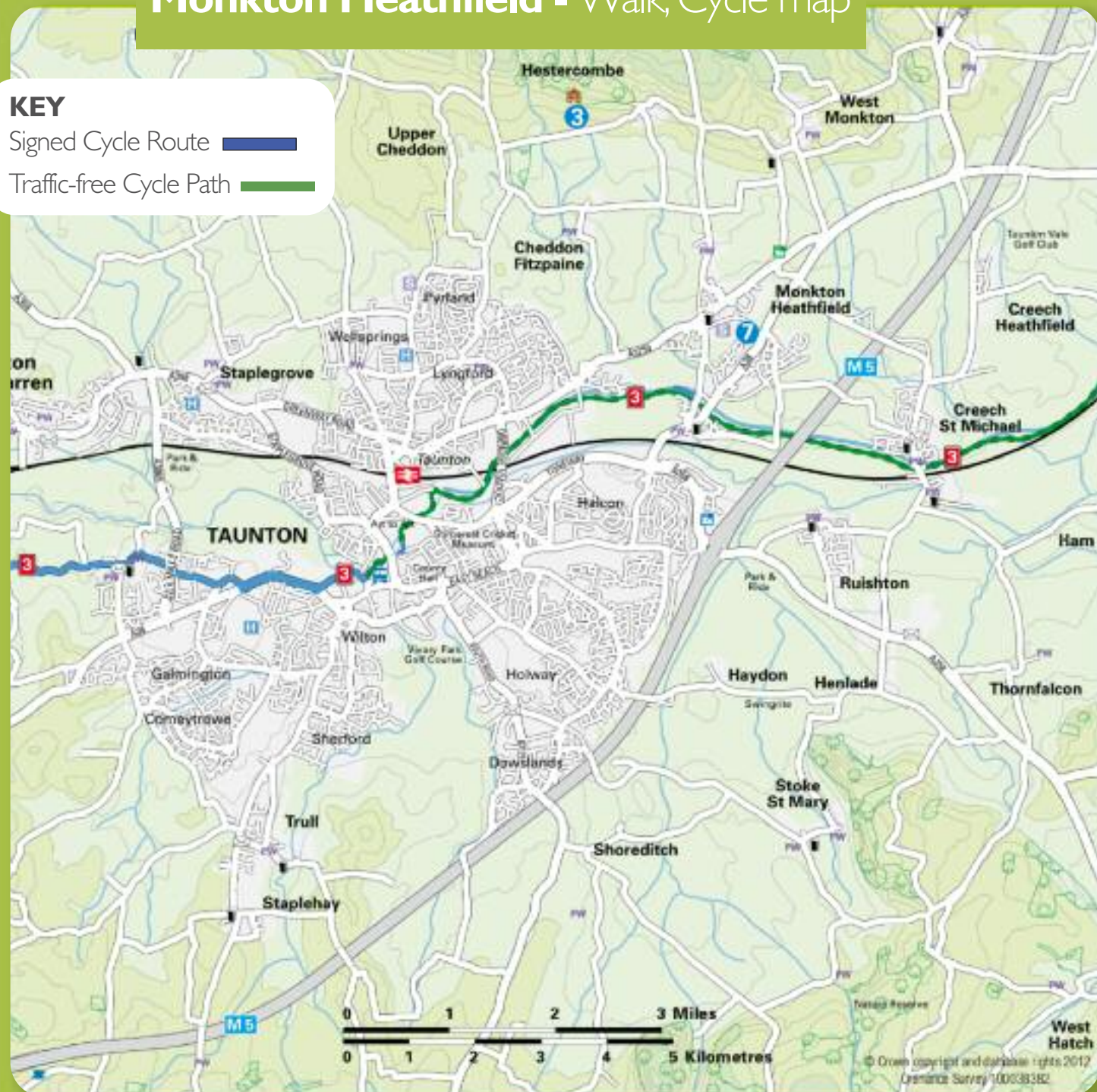


# Monkton Heathfield - Walk, Cycle map

## KEY

Signed Cycle Route 

Traffic-free Cycle Path 






# Monkton Heathfield - Bus map

## KEY

Service no. 12 

Service no. 15 

Service no. 21 

Service no. 29 

Monkton  
Heathfield

7

Bathpool

Crown  
Industrial  
Estate

Cinema

Government  
Offices

Swimming

Retail  
Park

M5

River Tone

Bridgwater

# Walking Map

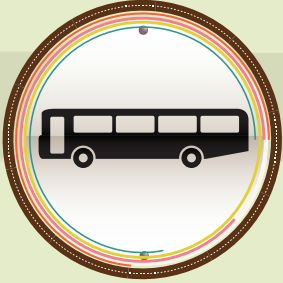
## KEY

Footpaths (no cycling)





# How to get around... **Coach**



**A coach can be a more financially viable option than driving the car.**

**If you don't fancy taking the train, a cheaper option may be by coach. With regular services running to various parts of the country, it can be a more financially viable option than driving the car.**

National Express coaches operate a bookable service from Taunton bus station to many locations across the country including Birmingham, Bournemouth, Bristol, Cardiff, Manchester, Newquay, Plymouth and London.

Berrys Coaches operate a bookable Superfast service to London and Excursion days from Taunton. Excursion days range from city shopper days in Bath, Bristol, Cardiff and Oxford (to name a few) to theatre days, scenic tours and visits to special events. Day-tours for the coming week are listed in the back of the Somerset County Gazette and the Bridgwater Mercury.

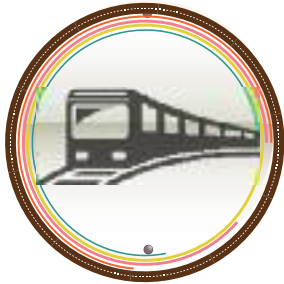


**Journey time from Taunton Bus Station.**





# How to get around... **Trains**



Often buying your ticket at least 24 hours in advance can be much cheaper.

**T**he nearest train station is **Taunton Station** and is a main line station with easy links to **Exeter, Bristol and London, as well as the rest of the country.**

**Practical information**  
about using the Trains from Taunton



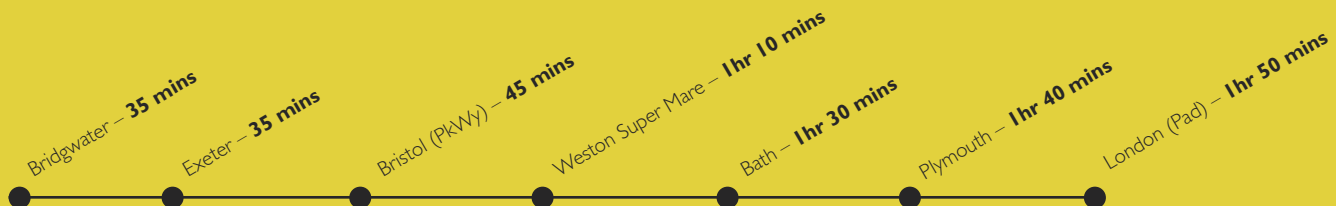
- Taunton Station is located on Station Road to the north of Taunton town centre, a 35 minute walk or 9 minute cycle ride from the Aginshill Meadow development.

As a main line station all of the major towns and cities in the south west are in easy reach e.g. Plymouth, Exeter, Bristol, Bath and London. Many local services also run e.g. Bridgwater, Weston Super Mare, Frome, Yeovil etc.

## Getting **on the train**

- Look up the times of the trains to your destination – use the various National Rail Enquiries services to get the time of the next train: website **[www.nationalrail.co.uk](http://www.nationalrail.co.uk)**  
**Tel: 08457 48 49 50**  
(see back of booklet for further details).
- Buy your ticket – You can order your ticket on the internet, over the phone or at the station before you get the train. Sometimes if the station is unstaffed you can buy the ticket on the train itself. Often buying your ticket at least 24 hours in advance can be much cheaper than buying on the day, especially if you commit to using specific trains. Railcards for Young Persons, Family and Over 60's are also available and benefit the user with much discounted travel. And don't forget your Green Travel Vouchers if you are entitled to them, they can be used to buy season tickets for your journey to work (not one-off journeys).
- On the train – Have your ticket to hand as you may be asked to show your ticket more than once during your journey and when you get off.

## Journey time from Taunton Train Station



# How to get around... **Motorcycle**



A motorcycle can be cheaper to run than the car and a more environmentally friendly option.



**If you are travelling alone and prefer motorised travel, using a motorcycle can be cheaper to run than the car and a more environmentally friendly option. It can reduce travel time for both you and other road users by either by-passing traffic or taking up less road space and therefore reducing congestion.**

If you would like to learn to ride a motorcycle or already have a license but are a bit rusty and require a refresher course, why not contact one of the many motorcycle training schools in Taunton.

**Practical information**  
about travelling by motorcycle

Many car parks have dedicated areas for motorcycle parking, making parking easier and reducing the risk of any damage happening to the vehicle. Within Taunton

town centre there are 4 car parks with dedicated motorcycle parking:

- Elms Parade – off Staplegrove Road
- Coal Orchard – off St James Street
- Whirligig Lane – off Magdalene Street
- Musgrove Park Hospital – Duchess 2 Car Park off Parkfield Drive

If you already own a motorcycle you may find the following shops useful:

- Bitza Bikes – Riverside Works, Bathpool
- Grahams Motorcycles – Wood Street, Taunton
- GV Bikes – Whitehall, Taunton
- Total Triumph – Wellington Road, Taunton

Don't forget you can use your Green Travel Vouchers (if you are entitled to them) to purchase motorcycle equipment including helmets (but not servicing or labour costs).

# How to get around... **Driving**



Although being able to hop into your car and just drive is very convenient, it may not be the cheapest option.



**A**lthough being able to hop into your car and just drive is very convenient, it may not be the cheapest, fastest or most environmentally friendly option. However, there are steps that you can take to reduce the impact of driving on your pocket and the environment. So why not consider some of the ideas below and try something new?

## **Practical information** about travelling by car.

The Moving Forward website has a number of tips for greener driving:

- The simplest way is to try to reduce the number of car journeys you need to make.
- Try sharing your journey with other people (see Car Share Somerset), thereby saving money on travel costs for

all of those in the car and reducing the number of cars on the road.

- Try combining your car journeys, carrying out several tasks in one journey instead of individually.
- Try travelling at quieter times of the day, avoiding rush hour if you can.
- Why not use your car for only part of your journey and use the Park and Ride service, or walk the rest.
- If your children are leaving school or home, perhaps this is your opportunity to change the car for a smaller, more fuel efficient one.
- Look into public transport and walking/cycling routes near your home.

Maybe you could use these for a couple of days a week, especially in nice weather.



# Reducing travel in other ways...

**T**hinking carefully about how you travel is important – but it may be that you don't have to make that journey at all. Cutting the number of journeys you make could save you time, hassle and money.

## Practical information about working from home

**Flexible working** (or changing the times you work) and **home working** (or changing where you work) can have major rewards in terms of lifestyle.

- Why not ask your employer if they can do anything to support flexible and home working. There are a number of rewards that your employer might not be aware of – such as improved staff morale, increased productivity and the potential to provide bigger personal workspaces.
- Can you set up a home office space to work from home, even for just one day a week? You can use your Green Travel Vouchers to help you do this by using them against the following:
  - \* Broadband (max. 3 months bills)
  - \* Computer equipment (not games) including laptop and printer
  - \* Home office desk to value of £150
  - \* Home office storage
  - \* Lighting
  - \* Office chair
  - \* Other DSE type equipment (rests, supports, holders, etc)
  - \* Small office equipment / stationery
  - \* WiFi router
- Visit the Moving Forward for Business website for further ideas and information on working from home: [www.movingsomersetforward.co.uk/business](http://www.movingsomersetforward.co.uk/business)

## Practical information about going shopping

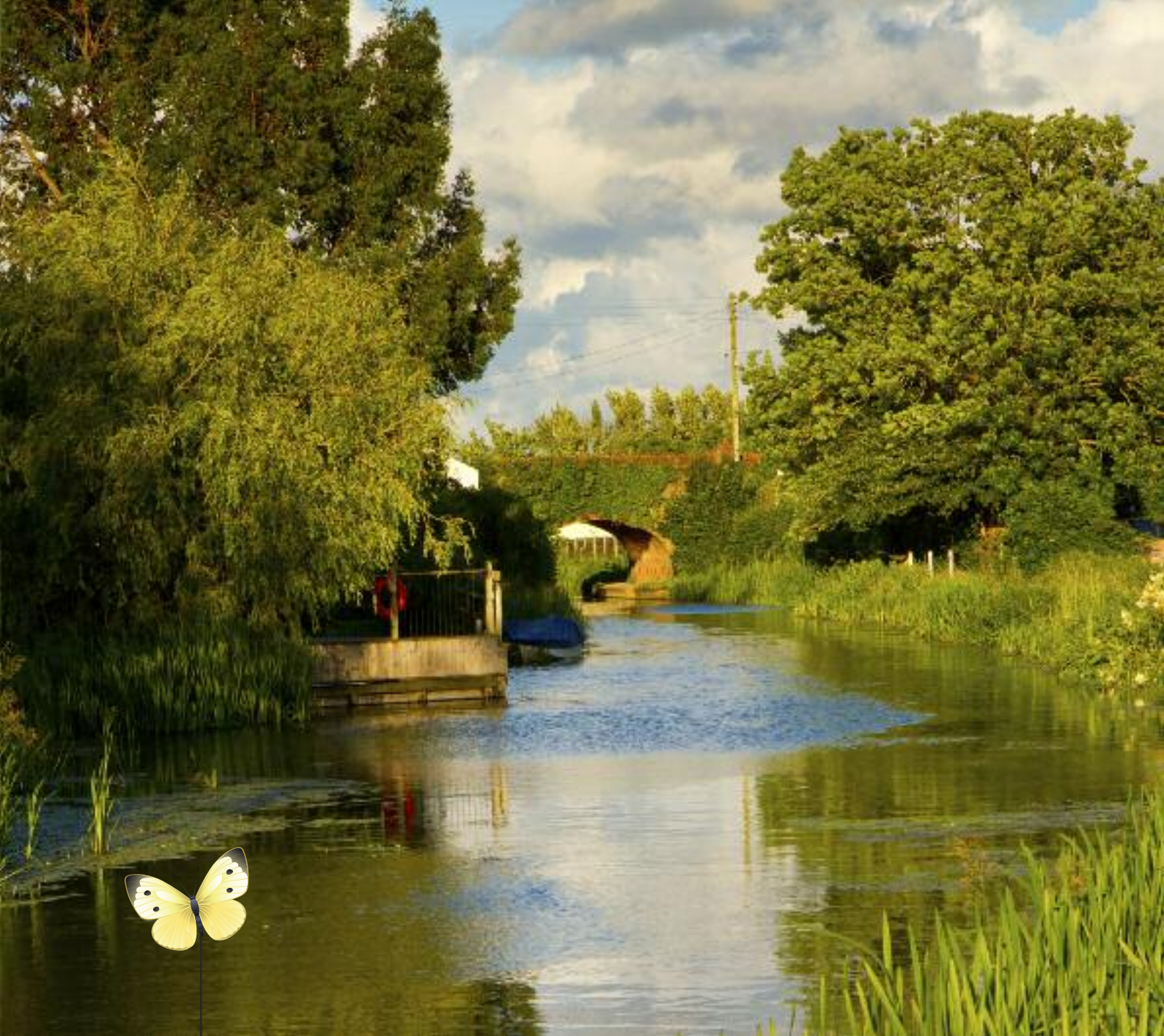
Shopping locally and buying locally sourced products is a good way to improve your lifestyle and support local suppliers. There are local shops located just a short walk from your home within the village of Monkton Heathfield.

If a greater choice is what you're after, Sainsburys and Asda is just an 8-10 minute bike ride away (from the Aginshill Meadow development). Using your Green Travel Vouchers, maybe you could invest in a new rucksack or some bicycle panniers to help carry your shopping home.

For bigger shops why not do your shopping online and have it delivered to your door. This not only avoids having to travel to the shops but also the queues at the tills, and can even save you money by encouraging you to stick to a budget as the cost is tallied up as you shop. Most national supermarkets have an online shopping service.







**Bridgwater & Taunton Canal**



# Practical information about days out / things to do.

Instead of getting in the car to enjoy a day out why not take advantage of what is on your doorstep within either walking or cycling distance, or even a short bus ride away? The journey itself could then become part of the fun e.g. a cycle ride along the canal, stopping for lunch along the way or a family trip to the museum or swimming pool, when the children can enjoy taking the bus.

## What is there to do locally:

### Hestercombe Gardens

Cheddon Fitzpaine, Taunton,  
TA2 8LG  
01823 413923  
[www.hestercombe.com](http://www.hestercombe.com)



### Hollywood Bowl

Heron Gate, Heron Way,  
Taunton, Somerset. TA1 2LP  
0844 826 1471  
[www.hollywoodbowl.co.uk/our\\_centres/taunton](http://www.hollywoodbowl.co.uk/our_centres/taunton)

### Odeon Cinema

Heron Gate, Heron Way, Taunton, Somerset TA1 2LP  
<http://www.odeon.co.uk/cinemas/taunton/134/>

### Monkton Elm Garden Centre

West Monkton,  
Taunton, TA2 8QN  
01823 412381  
[www.monktonelmgardencentre.co.uk](http://www.monktonelmgardencentre.co.uk)



### The Museum of Somerset

Castle Green, Taunton,  
TA1 4AA 01823 320201

### Tacchi-Morris Arts Centre

School Road, Monkton Heathfield, Taunton,  
TA2 8PD  
01823 414141  
[www.tacchi-morris.com](http://www.tacchi-morris.com)

### Taunton Swimming Pool

Station Rd, Taunton, TA1 1NN  
01823 284108  
[www.toneleisure.co.uk/centres/taunton-pool/](http://www.toneleisure.co.uk/centres/taunton-pool/)

### Tone Leisure

Various Sports Centres  
[www.toneleisure.co.uk](http://www.toneleisure.co.uk)



### Taunton Library

Paul St, Taunton, Somerset TA1 3XZ  
0845 345 9177  
[www.tauntonlibrary.org](http://www.tauntonlibrary.org)

### Vivary Park

Fons George, Taunton, Somerset,  
TA1 3JT

### Golf and Mini Golf

[www.toneleisure.co.uk/centres/vivary-golf-course](http://www.toneleisure.co.uk/centres/vivary-golf-course)  
01823 333875

### High ropes Course –

01823 217117  
[www.closetotheedge.co.uk](http://www.closetotheedge.co.uk)



### Edge Café

Vivary Park, Taunton, Somerset,  
TA1 3JT



# Further Information



## **Moving Somerset Forward**

The Moving Somerset Forward website contains travel maps and links to clubs and societies, information for people with children or disabilities as well as advice for businesses and schools.

[www.movingsomersetforward.co.uk](http://www.movingsomersetforward.co.uk)

## **Bike**

### **Cycle route planner**

[www.transportdirect.info/Web2/JourneyPlanning/FindCycleInput.aspx](http://www.transportdirect.info/Web2/JourneyPlanning/FindCycleInput.aspx)

### **Sustrans cycle route planner**

[www.sustrans.org.uk/what-wedo/national-cycle-network/online-mapping](http://www.sustrans.org.uk/what-wedo/national-cycle-network/online-mapping)

## **Bicycle Shops (Taunton)**

Bicycle Chain – Chip Lane,  
Staplegrove Road, Taunton  
01823 252499

## **Ralph Coleman Cycles –**

79 Station Road, Taunton  
01823 275822

## **Kings Cycles –**

30 Station Road, Taunton  
01823 352272

## **Buses**

### **Bus journey planners**

[www.transportdirect.info](http://www.transportdirect.info)

### **Traveline**

[www.traveline.org.uk](http://www.traveline.org.uk) 0871 200 2233

### **Nextbuses**

[www.nextbuses.mobi](http://www.nextbuses.mobi)

### **Operators**

#### **First bus -**

[www.firstgroup.com/ukbus/southwest/bristol/home](http://www.firstgroup.com/ukbus/southwest/bristol/home)

### **Faresaver –**

[www.faresaver.co.uk](http://www.faresaver.co.uk)

## **Trains**

### **National Rail Enquiries**

[www.nationalrail.co.uk](http://www.nationalrail.co.uk)

0871 200 49 50

## **Coaches**

### **National Express**

[www.nationalexpress.com](http://www.nationalexpress.com)

Pre book 0871 7818181

### **Berrys Coaches**

[www.berryscoaches.co.uk](http://www.berryscoaches.co.uk) 01823 331356

## **Motorcycle**

### **Motorcycle shops (Taunton)**

Bitza Bikes – Riverside Works, Bathpool,  
Taunton 01823 251974

Grahams Motorcycles – 45 Wood Street,  
Taunton 01823 331397

GV Bikes – Pooles Garage, Whitehall,  
Taunton 01823 276012

Total Triumph – A38, Wellington road,  
Taunton 01823 358899

## **Car**

### **Car share Somerset**

[www.carsharesomerset.co.uk](http://www.carsharesomerset.co.uk)

### **Park & Ride**

Taunton - [www.somerset.gov.uk](http://www.somerset.gov.uk) and search for Park and Ride

Bath – [www.bathnes.gov.uk](http://www.bathnes.gov.uk) and search for Park and Ride

Bristol – [www.travelbristol.org/parkandride](http://www.travelbristol.org/parkandride)

## **Taxis**

From railway stations – [www.traintaxi.co.uk](http://www.traintaxi.co.uk)

Yellow Pages – [www.yell.com](http://www.yell.com)







## Contact

**Aga Szewczak**

FMW Consultancy

Trym Lodge  
1 Henbury Road  
Westbury-on-Trym  
Bristol  
BS9 3HQ

Tel: **0117 959 6464**

Email: **[aga.szewczak@fmwconsultancy.com](mailto:aga.szewczak@fmwconsultancy.com)**

