

SOMERSET COUNTY COUNCIL
(A358 (STATION ROAD ROUNDABOUT JUNCTION) BISHOPS LYDEARD)
(40MPH SPEED LIMIT) ORDER 2017

SOMERSET COUNTY COUNCIL in exercise of its powers under Section 84 (1) and (2) of the Road Traffic Regulation Act 1984 (hereinafter referred to as "the Act of 1984") and of all other enabling powers, and after consultation with the Chief Officer of Police in accordance with Part III of Schedule 9 to the Act of 1984, hereby makes the following Order:-

1. This Order shall come into force on the 23rd day of March 2017 and may be cited as the "Somerset County Council (A358 (Station Road Roundabout Junction) Bishops Lydeard) (40mph Speed Limit) Order 2017".
2. The provisions of any other Order are hereby revoked but only in so far as they are affected by the restrictions imposed by this order.
3. No person shall drive any motor vehicle at a speed exceeding 40 miles per hour on the lengths of road specified in the Schedule to this order.

SCHEDULE 1
40 mph Speed Limit

A358/Station Road roundabout junction, Bishops Lydeard	<p>Eastern arm, from the roundabout junction in an easterly direction for a distance of 23 metres.</p> <p>Western arm, from the roundabout junction in a westerly direction for a distance of 41 metres.</p> <p>Northern arm, from the roundabout junction in a northerly direction for a distance of 120 metres.</p> <p>Southern Arm, from the roundabout junction in a southerly direction for a distance of 120 metres.</p>
--	--

GIVEN under the Common Seal of the Council this 17th day of March 2017

THE COMMON SEAL of the)
)
 COUNTY COUNCIL of SOMERSET)
)
 was hereunto affixed)
)

in the presence of

R. A. Hockley
 Authorised Officer



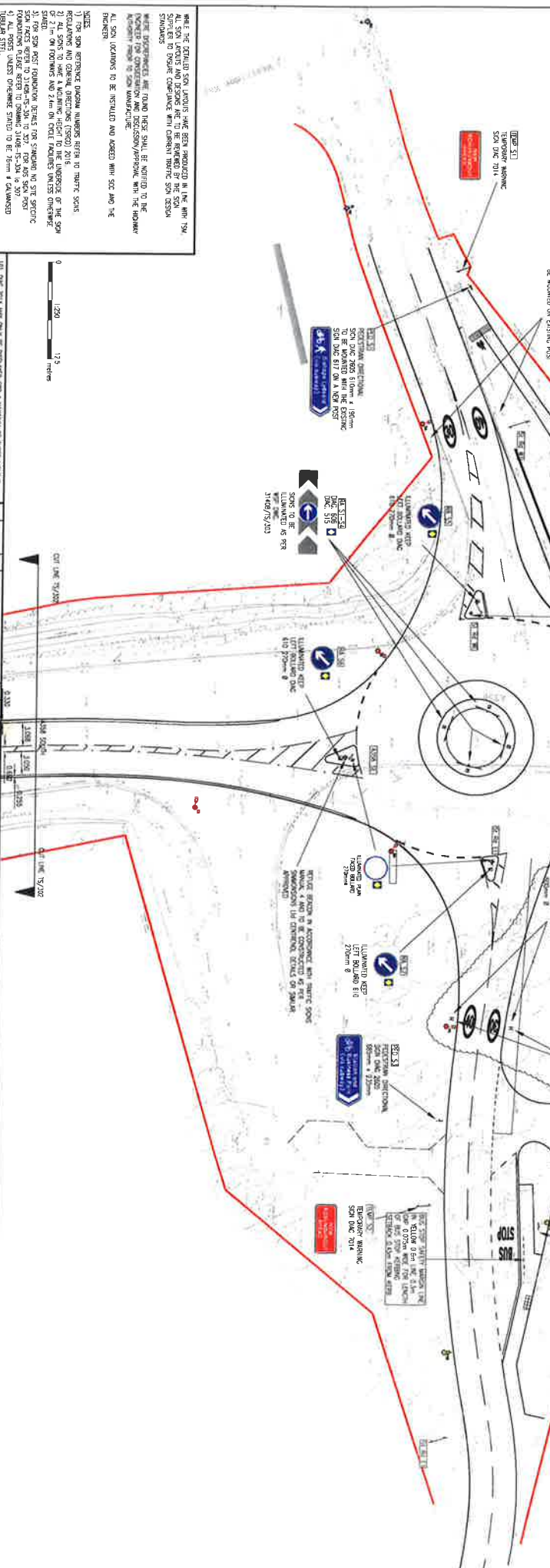
No. in Register 29007.....

STATEMENT OF REASONS FOR PROPOSING TO MAKE THE ORDER

For avoiding danger to persons or other traffic using the road or any other road or for preventing the likelihood of any such danger arising.



- ALL DMC NUMBERS BELOW REFER TO THE TRAFFIC SIGNS REGULATIONS AND GENERAL DIRECTIONS 2016
- LANE MARKINGS TO DMC 1004 - 4M LANE 2M CAP 1004M WITH
 - EDGE OF CARBONATE TO DMC 10121 - 1004M WITH
 - EDGE OF CARBONATE TO DMC 10031 - 02M WITH MARKINGS
 - EDGE OF CARBONATE AT ROAD JUNCTION MARKINGS TO DMC 1005 - 1004M DMC 1004M CAP 1004M WITH
 - MARKING TO DMC 1006 - 0200M MARKING 1004M WITH AT THE ENTRANCE
 - ROADWAY LANE TO DMC 1004 - 1004M 4M WALK 2M CAP
 - BUS STOP CARBONATE MARKING TO DMC 10033 - 1004M WITH STOPPED LANE 2M 2004M STOPPED LANE
 - SPEED LIMIT MARKING TO DMC 10051 - 1004M WITH 4.50M OR 7.500M LANE
 - SLOW CARBONATE MARKINGS 1004M WITH SLOW 1 TO DMC 10021 - 2.000M LANE 0.15 METER FOLLOW LANE AT 0.5M OR 0.75M LANE
 - NEW MARKINGS RELATED TO BE REGULATED AS PER SIGNAGE REGULATIONS AND GENERAL DIRECTIONS 2016 WITH CLEARANCE OF 4500MM TO 6000MM
 - NEW SIGN AND POST FACING DIRECTION INDICATED SIGN TO BE ADAPTED WITH REDUCING CLEARANCE OF 4500MM TO BE ADAPTED TO A CLEARANCE UNLESS OTHERWISE SPECIFIED
 - NEW AFS SIGN AND POST FACING DIRECTION INDICATED SIGN TO BE ADAPTED WITH REDUCING CLEARANCE AS DETAIL RECORD AND CLEARANCE FROM SIGNAGE AS DETAIL WITH THIS SCHEDULE 7
 - SON TO BE AT DANCING HOURS OF BUSINESS IN ACCORDANCE WITH THIS SCHEDULE 7
 - PROPOSED PERMANENT SIGN PROTECTIVE RIBBONS BE HORIZONTAL 200 OF SIGNAL TO BE IN 450-1 AND APPROVED UNDER DIRECTION 93 OF THE TRAFFIC SIGNS REGULATIONS AND GENERAL DIRECTIONS 2016
 - NEW PROTECTIVE RIBBONS ON ROAD APPROVED FOR SON TO BE HORIZONTAL 200 OF SIGNAL TO BE IN 450-1 AND APPROVED UNDER DIRECTION 93 OF THE TRAFFIC SIGNS REGULATIONS AND GENERAL DIRECTIONS 2016



- WHILE THE DETAILED SIGN LAYOUT HAS BEEN APPROVED IN THE AFS, ALL SIGN LAYOUTS AND DESIGNS ARE TO BE REVIEWED BY THE SON SIGNATURE TO ENSURE COMPLIANCE WITH CURRENT TRAFFIC SIGN DESIGN REGULATIONS
- ALL SIGN LOCATIONS TO BE INSTALLED AND APPROVED WITH SON AND THE SIGNAGE REGULATIONS AND GENERAL DIRECTIONS 2016
- 1) THE SIGN REFERENCE NUMBERS REFER TO TRAFFIC SIGNS REGULATIONS AND GENERAL DIRECTIONS (GSD) 2016
 - 2) ALL SIGN TO HAVE A MAXIMUM HEIGHT TO THE UNDERSE OF THE SIGN STATED
 - 3) THE SIGN REFERENCE NUMBERS REFER TO TRAFFIC SIGNS REGULATIONS AND GENERAL DIRECTIONS (GSD) 2016
 - 4) ALL SIGN REFERENCE NUMBERS STATED TO BE 750MM x 450MM
 - 5) FOR POST DETAILS INCLUDING PERFECTLY SHARP REFER TO DRAWING 31004-5-306 TO 307
 - 6) FOR SIGN REFERENCE NUMBERS REFER TO THE SIGN AND ON SIGNS
 - 7) ALL SIGN TO BE INSTALLED TO THE SIGNAGE REGULATIONS AND GENERAL DIRECTIONS 2016
 - 8) ALL SIGN TO BE INSTALLED TO THE SIGNAGE REGULATIONS AND GENERAL DIRECTIONS 2016
 - 9) ALL SIGN TO BE INSTALLED TO THE SIGNAGE REGULATIONS AND GENERAL DIRECTIONS 2016
 - 10) ALL SIGN TO BE INSTALLED TO THE SIGNAGE REGULATIONS AND GENERAL DIRECTIONS 2016
 - 11) ALL SIGN TO BE INSTALLED TO THE SIGNAGE REGULATIONS AND GENERAL DIRECTIONS 2016
 - 12) ALL SIGN TO BE INSTALLED TO THE SIGNAGE REGULATIONS AND GENERAL DIRECTIONS 2016
 - 13) ALL SIGN TO BE INSTALLED TO THE SIGNAGE REGULATIONS AND GENERAL DIRECTIONS 2016
 - 14) ALL SIGN TO BE INSTALLED TO THE SIGNAGE REGULATIONS AND GENERAL DIRECTIONS 2016
 - 15) ALL SIGN TO BE INSTALLED TO THE SIGNAGE REGULATIONS AND GENERAL DIRECTIONS 2016



ISSUED FOR CONSTRUCTION

NO	DATE	BY	REVISION
1	15/02/2022	WSP	ISSUED FOR CONSTRUCTION

WSP WSP Group plc

11031408 31408T/S01 N

TAYLOR WIMPEY

AGB ROUNDABOUT, BISHOPS LYDEARD

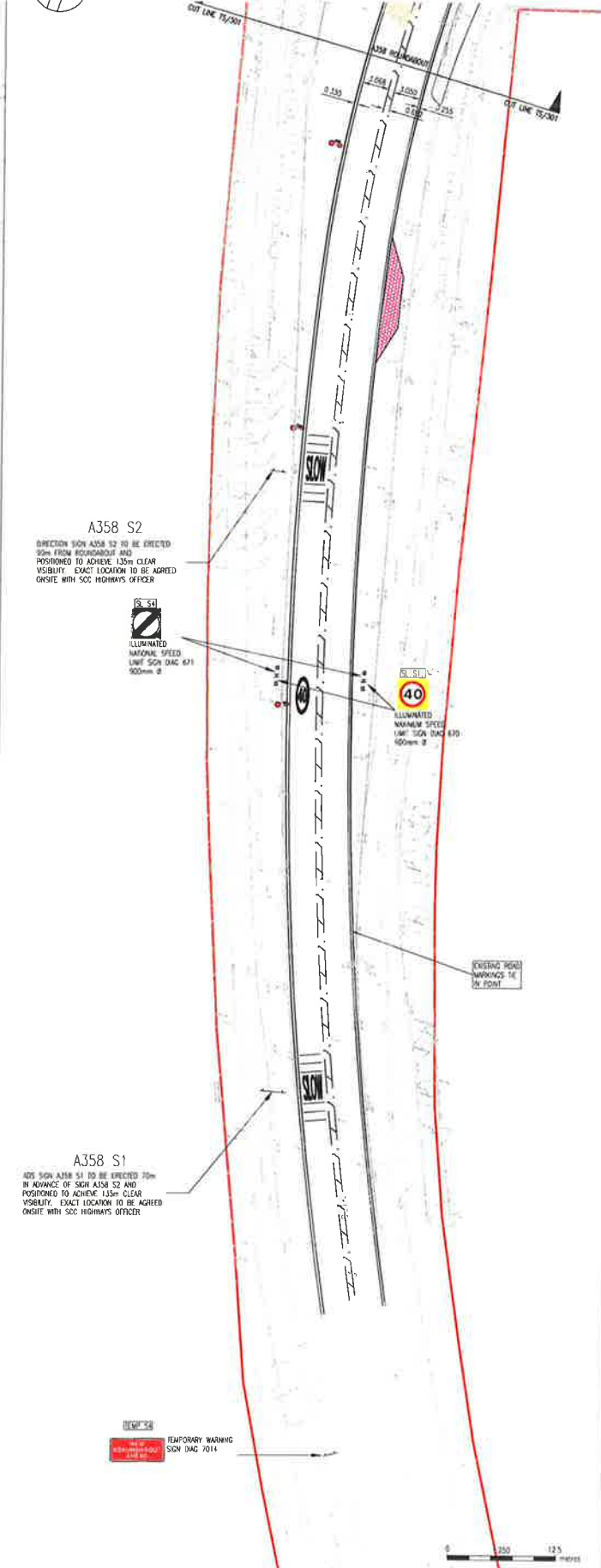
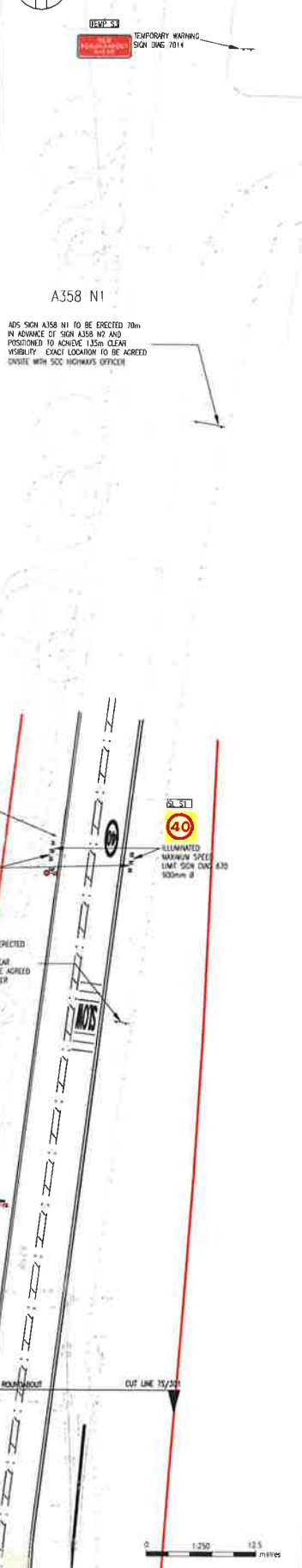
TRAFFIC SIGNS AND ROAD MARKINGS (1 of 2)

11031408 31408T/S01 N

© WSP Group plc

- EDGE OF CARRIAGEWAY TO DAC 1012.1, 100MM WIDE.
- CAVE WAY MARKINGS TO DAC 1023.1, CAVE WAY MARKINGS.
- EDGE OF CARRIAGEWAY AT ROAD JUNCTION MARKINGS TO DAC 1009, 600MM LINE, 300MM GAP, 100MM WIDE.
- HATCHING TO DAC 1010, CHEVRON MARKING 150MM WIDE AT JUNCTION CENTRES.
- BOUNDARY LINE TO DAC 1040, 100MM, 40 MARK, 2M GAP.
- BUS STOP CARRIAGEWAY MARKING TO DAC 1025.2, 100MM WIDE DASHED LINE & 200MM SOLID LINE.
- SPEED LIMIT MARKING TO DAC 1065, 1500MM WIDE, 4300 OR 7500MM LONG.
- SLOW CARRIAGEWAY MARKINGS, 160mm HIGH "SLOW" TO DAC 1024, 3 x 2050mm LONG, 0.15 WIDE YELLOW LINE AT 0.5m CENTRES.
- NEW ILLUMINATED BOLLARD TO BE INSTALLED AS PER SUBMITTALS LTD SPECIFICATIONS FOR SIGNAL BOLLARDS WITH GLOBAL BASE. SIGN TO BE MOUNTED WITH HORIZONTAL CLEARANCE OF 450mm TO KERB.
- NEW SIGN AND POST FACING DIRECTION INDICATED. SIGN TO BE MOUNTED WITH HORIZONTAL CLEARANCE OF 450mm TO KERB AND 2300mm TO UNDERSIDE OF SIGN OR 2400mm WHEN ADJACENT TO A CYCLEWAY UNLESS OTHERWISE SPECIFIED.
- NEW ADS SIGN AND POST(S) FACING DIRECTION INDICATED. SIGN HEIGHT AND CLEARANCE FROM CARRIAGEWAY AS DETAILED.
- SIGN TO BE LIT DURING HOURS OF DARKNESS IN ACCORDANCE WITH TSBSD SCHEDULE 7.
- PROPOSED PERMANENT RETRO REFLECTIVE ROADSTUDS ROADMARK 301 OR SIMILAR, TO BS EN 1463-1 AND APPROVED UNDER DIRECTION 59 OF THE TRAFFIC SIGNS REGULATIONS AND GENERAL DIRECTIONS 2002.
- HIGH FRICTION SURFACE ON A358 APPROACHES FOR 80m LENGTH COMMENCING 1m BACK FROM CIVE WAY LINE.

- NOTES**
- FOR SIGN REFERENCE DRAWING NUMBERS REFER TO TRAFFIC SIGNS, REGULATIONS AND GENERAL DIRECTIONS (TSBGD) 2014.
 - ALL SIGNS TO HAVE A MOUNTING HEIGHT TO THE UNDERSIDE OF THE SIGN OF 2.1m ON FOOTPATHS AND 2.4m ON CYCLE FACILITIES UNLESS OTHERWISE STATED.
 - FOR SIGN POST FOUNDATION DETAILS FOR STANDARD NO SITE SPECIFIC SIGN FACES REFER TO 31408-15-304 TO 307. FOR ADS SIGN POST FOUNDATIONS PLEASE REFER TO DRAWING 31408-15-304 to 307.
 - ALL POSTS UNLESS OTHERWISE STATED TO BE 76mm ø GALVANIZED TUBULAR STEEL.
 - FOR POST DETAILS INCLUDING PASSIVELY SAFE REFER TO DRAWING 31408-15-304 TO 307.
 - SIGNS THAT ARE TO BE ERECTED ADJACENT TO THE A358 AND ON POSTS GREATER THAN 76mm ø ARE TO BE PASSIVELY SAFE - THE PERFORMANCE CLASS SHOULD BE 100ME.2.
 - ALL SIGNS ARE TO BE LOCATED IN COMPLIANCE WITH THE TRAFFIC SIGNS MANUAL.
 - ALL WARNING/REGULATORY SIGNS TO BE LOCATED A MINIMUM OF 450mm FROM THE ADJACENT KERB LINE, 1200mm FOR ADVANCE DIRECTION SIGNS.
 - THE POSITION OF ALL SIGNS TO BE AGREED WITH THE SITE ENGINEER PRIOR TO INSTALLATION.
 - DAG 7014 MAY ONLY BE DISPLAYED FOR A MAXIMUM OF THREE MONTHS FROM OPENING AS PER TRAFFIC SIGNS MANUAL 2004 - CHAPTER 4 AND REMOVED BY THE CONTRACTOR AT THE END OF THAT PERIOD.
 - ALL 76mm ø POSTS TO BE GALVANIZED TUBULAR STEEL.
 - PASSIVE SAFETY POSTS TO BE JEROL SOCKETED POSTS AS STATED.
 - ANY ILLUMINATED TRAFFIC SIGNS OR BOLLARDS THAT ARE INSTALLED UNDER THIS CONTRACT MUST COMPLY WITH SPEC TERM LIGHTING MAINTENANCE CONTRACT AND IN PARTICULAR VOLUME 2 GENERAL, SPECIFIC AND MATERIALS CLAUSES.
 - ALL NEW TYPE SIGN DESIGNS TO BE CONFIRMED BY THE SIGN MANUFACTURER AND DETAILS SUBMITTED TO THE ENGINEER FOR APPROVAL BY THE HIGHWAY AUTHORITY TO ENSURE COMPLIANCE WITH CURRENT TRAFFIC SIGN DESIGN STANDARDS.



P:\11031408_Bishops Lydeard\Drawings\AutoCAD\TS Traffic Signs Road Markings\TS-302.dwg 24/10/2016 16:39:31 Poulton, Matt

REV	DATE	BY	DESCRIPTION	CHK	APP
1	14/11/2014	MP	ISSUED FOR CONSTRUCTION		
2	14/11/2014	LCW	UPDATES FOR CONSTRUCTION		
3	14/11/2014	LCW	SIGNS UPDATES FOR STAGE 2 P&A COMMENTS		
4	14/11/2014	LCW	UPDATES IN RESPONSE TO CIE M&T COMMENTS		

WSP

Kable House, Southamway Gardens, Southamway East, Exeter, EX1 1NT
Tel: +44 (0)1392 267500 Fax: +44 (0)1392 267580
<http://www.wspgroup.com>

TAYLOR WIMPEY

ADDRESS: **A358 ROUNDABOUT, BISHOPS LYDEARD**

TITLE: **TRAFFIC SIGNS & ROAD MARKINGS (2 OF 2)**

SCALE: 1:500	DRAWN: PRW	APPROVED: SC
DRAWN: TS-022/DWG	CHECKED: NUB	DATE: September 15
PROJECT NO: 11031408	PROJECT FILE: 31408/TS/302	REV: G

© WSP Group Ltd