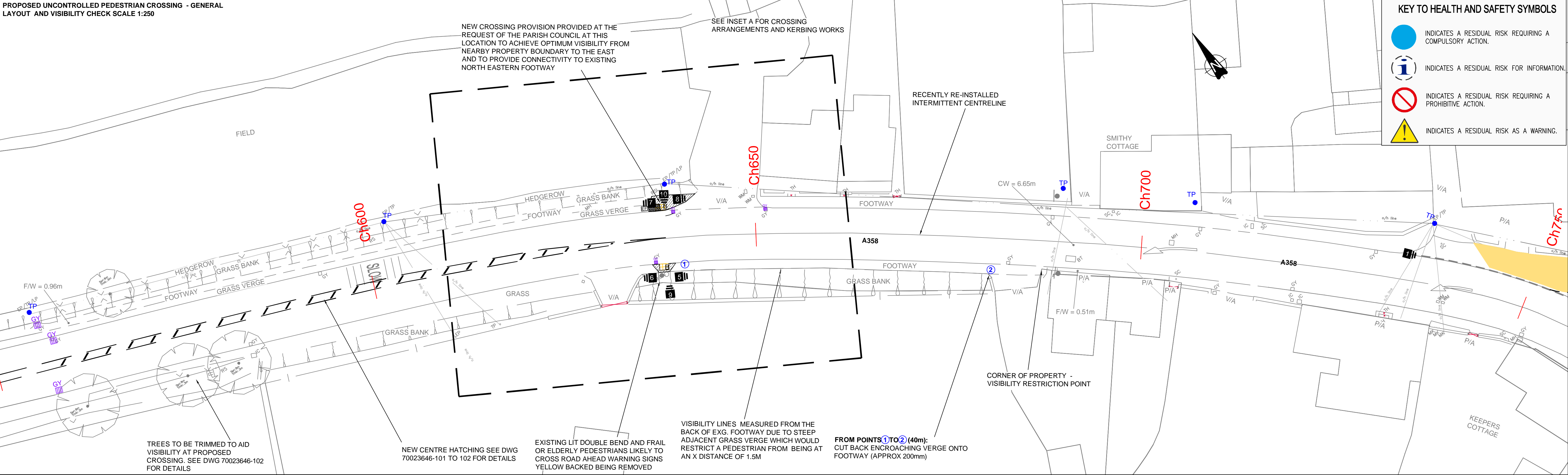


PROPOSED UNCONTROLLED PEDESTRIAN CROSSING - GENERAL  
LAYOUT AND VISIBILITY CHECK SCALE 1:250



**KEY TO HEALTH AND SAFETY SYMBOLS**

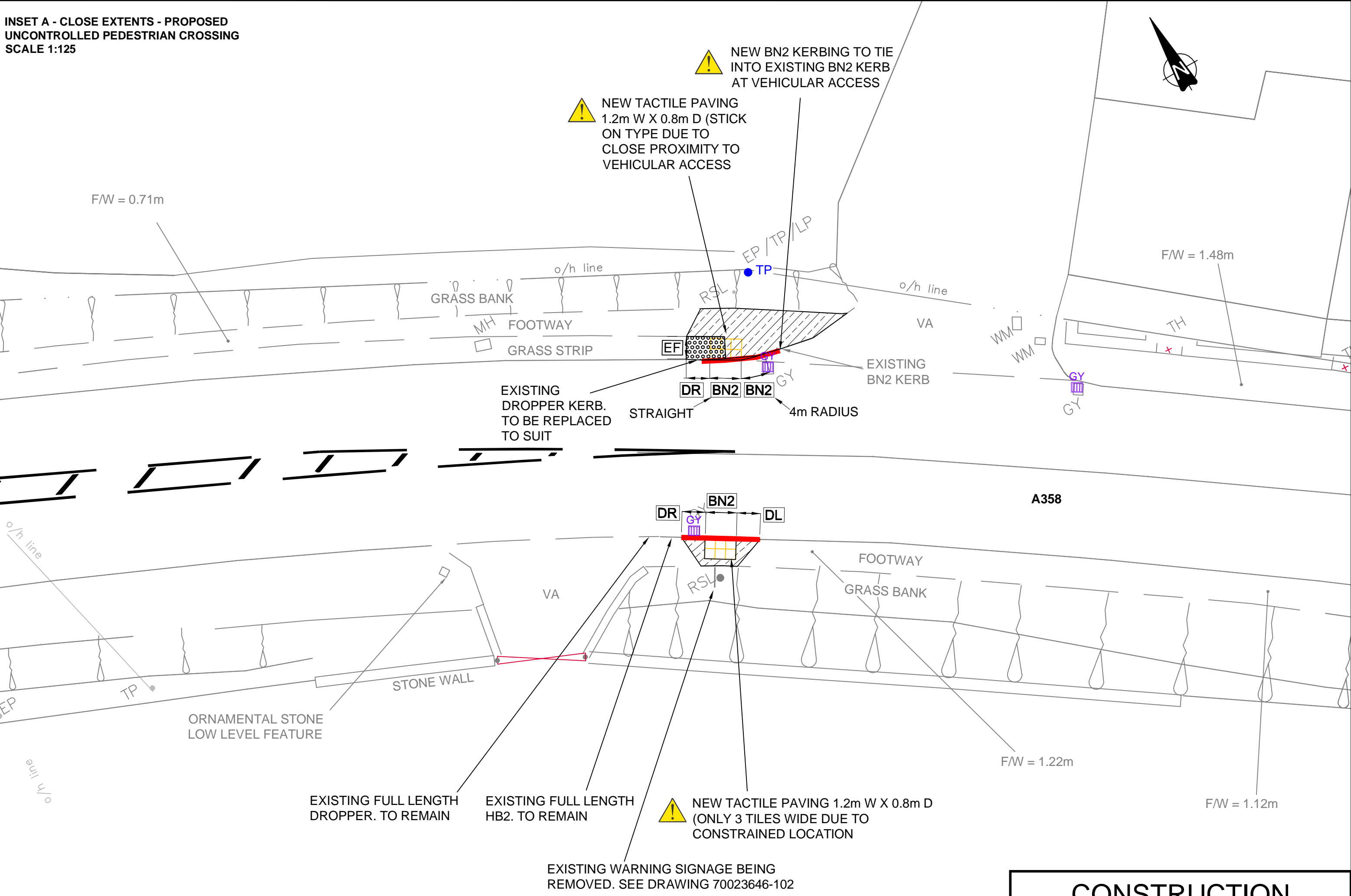
- INDICATES A RESIDUAL RISK REQUIRING A COMPULSORY ACTION.
- INDICATES A RESIDUAL RISK FOR INFORMATION.
- INDICATES A RESIDUAL RISK REQUIRING A PROHIBITIVE ACTION.
- INDICATES A RESIDUAL RISK AS A WARNING.

**NOTES:**

- ALL DIMENSIONS ARE IN MILLIMETRES UNLESS STATED OTHERWISE.
- ALL NEW ROAD MARKINGS DETAILS ARE SHOWN IN BOXES AS BELOW:
- ALL ROAD MARKINGS BEING REFRESHED ARE SHOWN IN BOXES AS BELOW:

DIAGRAM	SOE	P	L
WIDTH	COLOUR		
TYPE			
MARK	GAP		

DIAGRAM	SOE	P	L
WIDTH	COLOUR		
TYPE			
MARK	GAP		



**KEY PROPOSED**

TEXT = PROPOSALS  
MT = MOUNTING HEIGHT TO UNDERSIDE OF SIGN

PROPOSED SIGN POST LOCATION

PHOTOGRAPH LOCATION

SIGN REFERENCE NUMBER

LOCATION NUMBER

1065 - 4.3M/7.5M LONG ROUNDELS (4.3M UNLESS OTHERWISE SPECIFIED)

1024 - NEW SLOW ROAD MARKING 1.6M HIGH (UNLESS OTHERWISE SPECIFIED) WITH OR WITHOUT YELLOW TRANSVERSE BAR MARKINGS

VISIBILITY LINES X = 1.5M Y = 85M UNLESS OTHERWISE STATED. 85M IS EQUIVALENT TO 35MPH DMRB OR 40MPH MIS

**EARTHWORKS/LANDSCAPING**

LANDSCAPED AREA - TOP SOIL GRASS SEED

EXISTING TREES TO BE RETAINED

= CONSERVATION AREA

**SITE CLEARANCE**

VEGETATION TO BE CLEARED TO TIP OFF SITE

AREA OF GENERAL SITE CLEARANCE, INCLUDING THE REMOVAL OF ALL EXISTING KERBING

TAKE UP EXISTING KERBS AND DISPOSE TO TIP OFF SITE

= NEW GLASDON RX TYPE (OR SIMILAR) REFLECTIVE VERGE MARKER POSTS 450MM FROM EDGE OF CARRIAGEWAY

= RED UNI-DIRECTIONAL EDGE STUDS 18M SPACINGS FOR NEAR-SIDE TRAFFIC

**SEE CONSTRUCTION DETAIL DRAWING 70023646-015 FOR KERBING DETAILS**

HALF BATTERED KERB - 255 DEPTH

BULL NOSED KERB - BN - 305 DEPTH

DROPPER KERB BETWEEN THE ADJACENT FULL HEIGHT & LOW HEIGHT KERBS (L-LEFTHAND, R-RIGHTHAND)

FOOTPATH EDGING - FLAT TOP - 50 x 150

= EXCAVATE OUT EXISTING IN PREPARATION OF NEW FOOTWAY TYPE F1A SURFACE COURSE AND REGULATING COURSE (SCC TYPE AA) (REGRADE TO BACK OF FOOTWAY) FOR DETAILS SEE DWG 70023646\_015

= NEW FULL DEPTH F1 (SCC TYPE C), FOR DETAILS SEE DWG 70023646\_015

PROPOSED BUFF BLISTER TACTILE PAVING, SEE CONSTRUCTION DETAIL DRAWINGS 70023646\_015

= NEW WHITE IN COLOUR JUNCTION BOLLARD 450MM FROM EDGE OF CARRIAGEWAY

**KEY EXISTING**

TEXT = EXISTING CONDITIONS  
C/W = CARRIAGEWAY WIDTH  
F/W = FOOTWAY WIDTH  
EP = ELECTRICITY POLE  
TP = TELEPHONE POLE  
P/A = PEDESTRIAN ACCESS  
V/A = VEHICULAR ACCESS

Ch50 = CHAINAGE SYSTEM

EXISTING SIGN POST LOCATION

= ROUNDELS

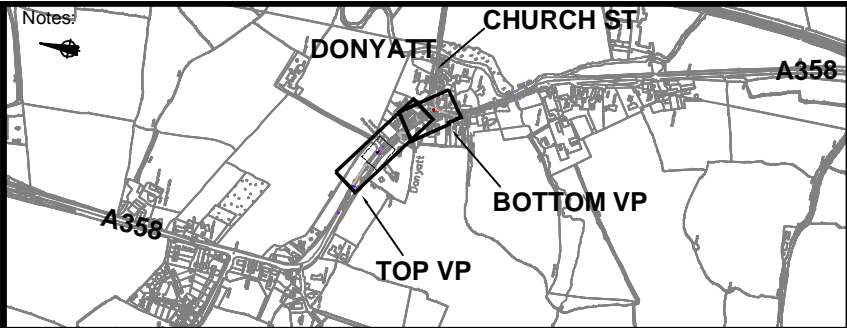
= SLOW ROAD MARKING

= EXISTING LIGHTING COLUMN

= PROPOSED LIGHTING COLUMN

© Crown Copyright and database right (2015), Ordnance Survey 100038382

Rev	Date	Description	By	Chk	App
-	11/17	Consultation	OG	AB	SW
A	12/17	Minor Changes	OG	AB	SW
B	07/18	Issue to RSA	OG	AB	SW
C	12/18	ISSUE TO SCC - CONSTRUCTION	BH	JMP	SW



**wsp**

2 Tangier Central, Castle Street, Taunton, TA1 4AS, UK  
T +44 (0) 1823 281 190, F +44 (0) 1823 281 190  
wsp.com

Client:

**SOMERSET**  
**Somerset County Council**  
County Hall  
Taunton  
Somerset  
TA1 4DY  
www.somerset.gov.uk

Site/Project:

**SIS TI004295**  
**A358 Donyatt Traffic Calming**

Title:

**New Uncontrolled Crossing**  
**Sheet 1 of 1**

CONSTRUCTION		
Drawn: OG	Checked: AB	
Designed: JMP	Approved: SW	
Date: 10/12/2018	Scale: AS SHOWN A1	Sheet: 1 of 1
Project Number: 70023646	Drawing Number: 110	Revision: C
© Copyright Parsons Brinckerhoff		