

Taking a Catchment Approach

Andy Hicklin
Planning & Environment Manager
November 2011

Engagement – where we want to be

- Knowing what we know – and don't know!
- Joined up with Flood approaches
- Acknowledged as excellent facilitators
- Everybody feeling part of the solution

Context

- Judicial Review
- Ministerial Launch 22 March
- Statement of position from Defra with binding actions

DEFRA Pilots – to December 2012

Aim: Test approaches to improved engagement, information sharing and co-ordination of action at a catchment level to assess how we:

- Get more action at a local level, from across society, to protect and improve water.
- Build approaches that deliver multiple objectives.
- Steer development of guidance for we do second-cycle planning.

10 Pilots

- Urban and Rural
- With and without history of partnership
- Large and small
- Range of pressures
- Range of water body types



New pilots

- 70 expressions of interest
- 10 in the South West
- 15 'successful' including 2 in Wessex
- Dorset Frome & Piddle (Wessex Water)
- Bristol Avon (BANES, Avon Frome Partnership, Groundworks South West)
- But we want to try to work with all

Challenges

- Limited time-span
- No specific extra money
- Integrating with existing initiatives in the catchment
- We are still delivering across all catchments – must avoid the ‘Black hole’ effect
- Our language, skills and capacity to effect good engagement and partnership

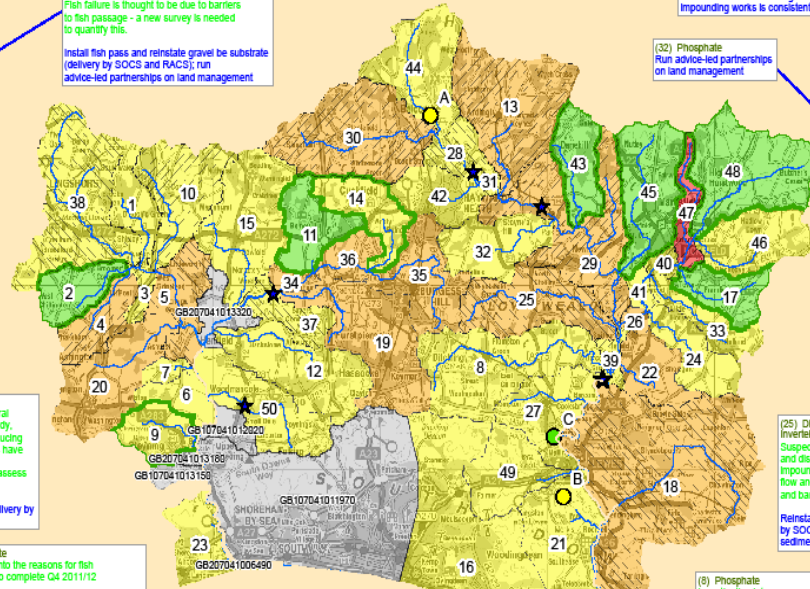
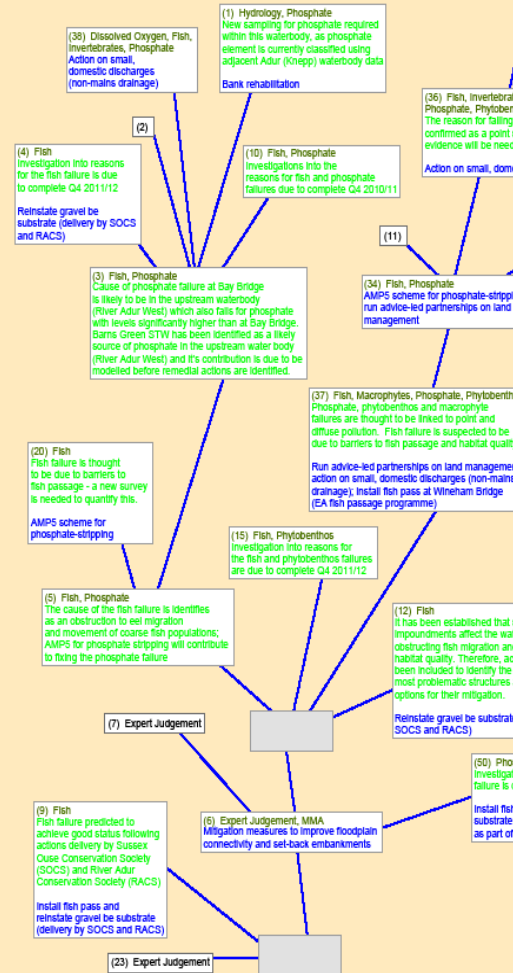
What this means for us

- More open on options to get us to 'Good'
- There is no guarantee that the catchment level approach is the key to driving more action – local identity and commitment won't link to catchments
- BUT catchments allow us to show how things interact and connect so let's build on that.

What might it look like

- Much more visual
- More open on the options that could get us to Good- cost concerns brought in later
- Not gold-plated: “Dribble, not Ribble”
(But learning from Ribble is incredibly valuable!)

Adur & Ouse River Catchments and Lakes



Legend

Lakes

- Good
- Moderate
- ★ WFD Fish Passes
- mean_high_water_010k
- WFD river
- ▨ WFD better rivers first round
- ▨ WFD better rivers second round
- ▨ Good Status by 2015

River Catchments

- Good
- Moderate
- Poor
- Bad
- Not Assessed

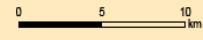
To carry out investigations in each waterbody to understand reasons why it is failing good status

To undertake AMP5 investigations in numerous waterbodies across the catchment, into Sewage Treatment Works emissions to meet EQS (delivery by Southern Water)

EA and NE to work together to target CSF and agri-environment schemes to ensure adoption of best farming practice

To undertake a pilot project to ensure waterbody information informs Environmental Stewardship across the South Downs (joint working between Natural England and EA)

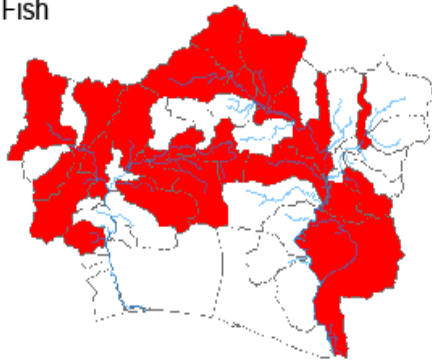
Mitigation measure for appropriate water level management strategies, including timing and volume of water moved.



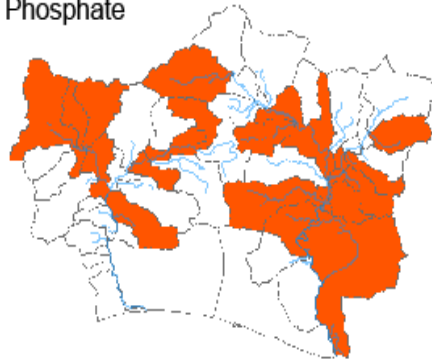
Map produced by Data Quality Management, Southern Environment & Performance on behalf of HMBDO. © Crown copyright and database right 2011. All rights reserved. Ordnance Survey Licence number: 100026380. © Environment Agency.

**Adur & Ouse catchment (SE River Basin District)
Elemental failures by river sub-catchment**

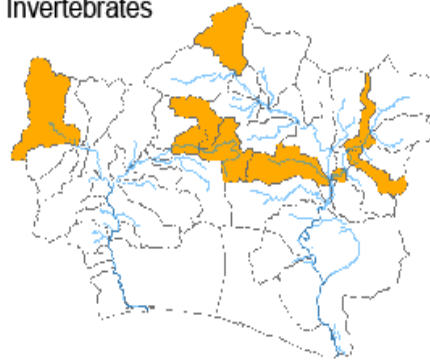
Fish



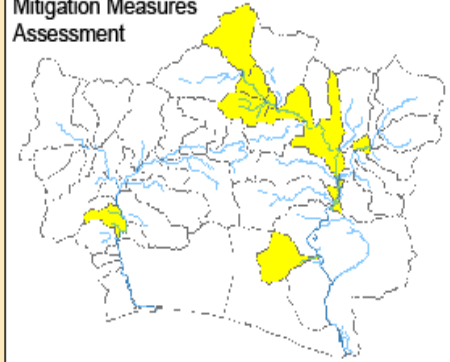
Phosphate



Invertebrates



Mitigation Measures
Assessment



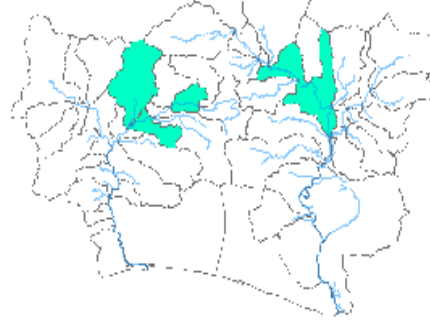
Expert Judgement



Hydrology



Phytobenthos



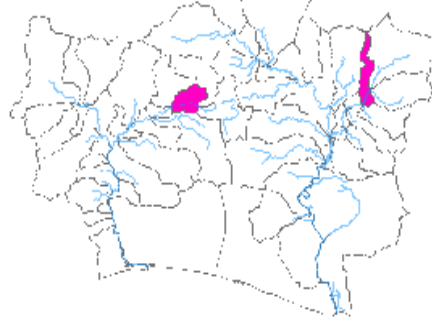
Dissolved Oxygen



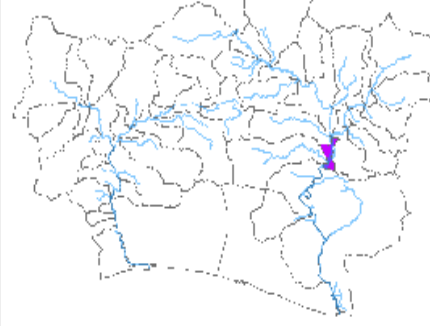
Macrophytes



Morphology



Benzo (ghi) perylene and
Indeno (123-cd) pyrene



Success?

At a catchment level:

- Wider understanding and ownership of problems
- Greater commitment to actions that will protect and improve water
- Pressures with no easy solution have been explored across the pilots
- We have a repeatable processes for engagement that drive greater action to protect and improve water
- We have tried some novel approaches to engagement
- We understand how better to share information and integrate delivery of multiple objectives

What can you do?

- Share your knowledge and networks
- Help us understand how land and water interact at a local level within a catchment
- Encourage people to get involved
- Take action, no matter how small
- Collective actions changing behaviours

Discussion points

From your perspective, what do you feel about:

- Aims
- Principles
- Challenges
- Success
- Leadership