



**Somerset County Council**

# **Minerals and Waste Development Scheme: 2010 - 2013**



[WWW.SOMERSET.GOV.UK](http://WWW.SOMERSET.GOV.UK)



This document has been prepared by Somerset County Council.

© Somerset County Council

Cover photographs copyright: Somerset County Council  
Photographs show: Highbridge Household Waste Recycling Centre (top)  
Batscombe Quarry (bottom)

Copies of this document are available from:

Somerset County Council  
Environment Directorate  
County Hall  
Taunton  
Somerset  
TA1 4DY  
Tel: 0845 345 9188  
Email: [mineralsandwaste@somerset.gov.uk](mailto:mineralsandwaste@somerset.gov.uk)

For further details of the Somerset Minerals and Waste Development Framework, and to view and download this and other documents, please visit our website.

[www.somerset.gov.uk/mineralsandwaste](http://www.somerset.gov.uk/mineralsandwaste)

#### Document control record

Name of Document: Minerals and Waste Development Scheme  
Author: Somerset County Council  
Description of content: Outlines delivery plan for the Minerals and Waste Development Framework 2010-2013

Approved by: Cabinet Member: Strategic Planning & Economic Development  
Date of approval: 25 November 2010

Assigned review period: 3 years  
Date of next review: 2013

Revision	Date	Comments
1	23 February 2005	Original Minerals and Waste Development Scheme
2	12 April 2007	Minerals and Waste Development Scheme Review 2007
3	25 November 2010	Minerals and Waste Development Scheme 2010 – 2013

# Executive summary

Somerset County Council is the Minerals and Waste Planning Authority for Somerset excluding Exmoor National Park. Current minerals and waste policy for Somerset is detailed in two documents: the Minerals Local Plan and the Waste Local Plan.

In 2004 there was a change in the legislation that guides Planning Authorities on policy development. Local Plans are to be replaced by Local Development Documents (in accordance with the Planning and Compulsory Purchase Act 2004). While Planning Authorities prepare their local development documents, the policies in adopted Local Plans, against which planning applications are judged, are 'saved' by central Government (meaning they remain valid).

A plan for producing the new suite of policy documents is summarised in the Local Development Scheme. For minerals and waste, this plan is termed a Minerals and Waste Development Scheme (MWDS), which details what will be produced and when. The suite of development documents for minerals and waste is collectively known as a Minerals and Waste Development Framework (MWDF).

Somerset County Council originally published its Minerals and Waste Development Scheme in 2005 and revised this in 2007. Now it's appropriate to update the scheme once again, taking into account changes in Government legislation and the progress made by Somerset County Council during the past three years.

## **Somerset County Council's Minerals and Waste Development Framework**

Somerset County Council proposes to include the following main documents in its Minerals and Waste Development Framework:

- Statement of Community Involvement (adopted in November 2006)
- Waste Core Strategy (Development Plan Document)
- Minerals Core Strategy (Development Plan Document)
- Waste Site Allocations (Development Plan Document)

In addition, Annual Monitoring Report is produced every year that outlines the progress made in delivering the MWDS.

The planned timetables for delivering the three Development Plan Documents (DPDs) listed above are detailed in the tables on the next page.

The plan period for Somerset County Council's MWDF will run until 2028.

### Minerals core strategy DPD timetable

Production timetable	Dates
Regulation 25 (continuous engagement)	Ongoing
Regulation 27 (pre submission)	January 2012
Regulation 30 (submission)	May 2012
Pre examination	June 2012
Examination in Public	October 2012
Adoption	Mid 2013

### Waste core strategy DPD timetable

Production timetable	Dates
Regulation 25 (continuous engagement)	Ongoing
Regulation 27 (pre submission)	August 2011
Regulation 30 (submission)	December 2011
Pre examination	February 2012
Examination in Public	May 2012
Adoption	Autumn 2012

### Waste site allocations DPD timetable

Production timetable	Dates
Regulation 27 (pre submission)	Mid 2013
Regulation 30 (submission)	Late 2013
Adoption	2014

**Ensuring successful delivery**

The MWDF documents will be largely prepared by County Council staff in its Minerals and Waste Policy team. Thus maintaining this team throughout the life of the project will be an important prerequisite to successful delivery of the project. The costs for this will be met from Somerset County Council's existing budget.

Selected tasks, such as flood risk assessments, are likely to require external expertise. Such additional support will be brought in as needed.

There will also be costs associated with undertaking consultations with stakeholders (those with an interest in either subject) and the required Examination in Public (EiP). The costs for consultation and EiP will need to be reviewed on an annual basis and the allocation of funds for these will take place through the County Council's annual budgeting process.

The Minerals and Waste Policy team works with the Minerals and Waste Task Group, which consists of a group of selected Elected Members (Councillors) who provide a view on how the work is progressing. They also hear the background evidence to the decisions made and endorse these if they see fit.

Relevant Cabinet Members, Cabinet and Full Council make decisions on specific MWDF issues throughout the lifetime of the project, informed by dialogue with the Minerals and Waste Task Group. A scrutiny committee is in place to scrutinise decisions of Cabinet Members and Cabinet as appropriate and to provide their views before any recommendations are made to Full Council.

To be found 'sound' during inspection – which is the precursor to formal adoption of the new planning policies – Development Plan Documents must be justified, effective and consistent with national policy. In meeting these requirements, Somerset County Council must consult on proposals and plans in a meaningful way as well as link with work programmes and plans outside the County Council's control. Various risks and dependencies have been identified, which will be monitored throughout the project.

## Minerals and Waste Development Framework

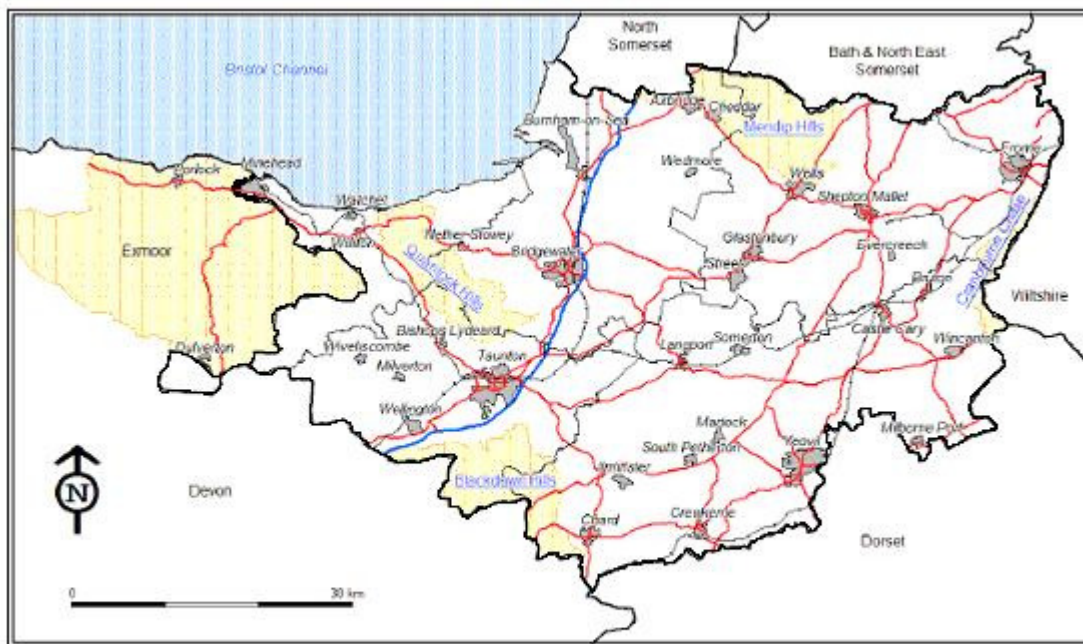
Executive summary.....	3
Introduction .....	7
Streamlining the planning process.....	7
Saved Plans .....	9
Building a strong evidence base .....	10
Project management.....	11
Constraints of the project.....	12
Dependencies.....	12
Risks and issues.....	12
How to get involved.....	14
Profile of framework documents.....	15
Statement of Community Involvement (SCI).....	15
Minerals Core Strategy DPD .....	16
Waste Core Strategy DPD.....	17
Waste Site Allocations DPD .....	18
Annual Monitoring Report (AMR).....	19
Stakeholders .....	20
External .....	20
Internal.....	20
Accessibility .....	21

# Introduction

Somerset County Council is the Planning Authority for minerals and waste in the county of Somerset, excluding Exmoor National Park (where minerals and waste planning is governed by a separate authority).

Somerset County Council adopted a Minerals Local Plan in April 2004 and a Waste Local Plan in February 2005. These documents are used to determine (pass or decline) mineral and waste planning applications submitted to Somerset County Council, and to monitor approved sites once they are operational.

**Minerals and waste planning in Somerset. The central area outlined in black represents the area cover by Somerset County Council's minerals and waste planning policy**



Scale 1:300,000

## Streamlining the planning process

The Planning and Compulsory Purchase Act 2004 and Planning Policy Statement 12 have prompted Somerset County Council to introduce a new development plan led approach to its minerals and waste policy work. Somerset County Council is now preparing a set of documents (Local Development Documents or LDDs) on minerals and waste to replace the current existing Local Plans. Development Plan Documents (DPDs) form part of the statutory development plan; other types of LDD (such as Supplementary Planning Documents) do not.



Following the enactment of the Planning Act 2008, central Government made clear its intention to simplify the planning policy process and help to ensure strategic priorities are delivered when they are needed. Consequently, central Government is guiding local authorities to use Minerals and Waste Core Strategies as the main delivery vehicle for proposed waste and mineral sites in their areas, with other LDDs playing a supplementary role.

Central Government recommends that 'strategic sites', which can be defined as those crucial to the delivery of the Core Strategy, are included in the Core Strategy DPD. The process of identifying 'strategic sites' will also entail developing broad locations and areas of search for non-strategic facilities. This approach should help to offer guidance on the strategic issues and allow the market a degree of flexibility in bringing forward smaller-scale facilities.

The Local Development Documents that Somerset County Council plans to produce on minerals and waste are detailed in the table below. Collectively these documents are known as the Minerals and Waste Development Framework (MWDF).

#### **Somerset County Council's Minerals and Waste Development Framework**

<b>Document</b>	<b>Acronym</b>	<b>Purpose</b>	<b>Status</b>
Statement of Community Involvement	SCI	Sets out how the general public and other stakeholders will be involved in the writing and adoption of the documents contained in the MWDF.	Adopted November 2006
Annual Monitoring Report	AMR	Assesses the progress made on the MWDF and to what extent the policies in the adopted documents are being used to determine (decide) planning applications	Annual report
Waste Core Strategy DPD	WCS	Identifies areas of search, including potential sites, where waste management is acceptable in principle and general policies for protecting residential amenity, features of wildlife, heritage and landscape importance.	In progress
Minerals Core Strategy DPD	MCS	Identifies sites where mineral extraction is acceptable in principle and general policies for protecting residential amenity, features of wildlife, heritage and landscape importance.	In progress
Waste Site Allocations DPD		Will identify those sites acceptable in principle for waste management but which are not included in the WCS	Not yet started



The plan for producing the new policy documents is summarised in a Local Development Scheme. For minerals and waste, this plan is termed a Minerals and Waste Development Scheme (MWDS). Somerset County Council originally published its Minerals and Waste Development Scheme in 2005 and then revised this in 2007. Now it's appropriate to update the scheme once again, taking into account changes in Government legislation and the progress made by Somerset County Council during the past three years.

The Minerals and Waste Policy team at Somerset County Council takes direction from a variety of sources. Until recently one important source has been the draft Regional Spatial Strategy (RSS) for the South West, which covers key issues such as housing, growth areas and transport. On 06 July 2010 the Secretary of State announced the revocation (abolition) of Regional Spatial Strategies.

Originally Somerset County Council aimed to align the plan period for the MWDF with the draft RSS, which was shaped to run until 2026. Since the RSS no longer has a role to play, and bearing in mind the need for the MWDF plan period to run for at least 15 years after adoption of the Core Strategies, Somerset County Council plans for its MWDF to run until 2028.

## **Saved Plans**

Until the new Core Strategies and supporting Local Development Documents are formally adopted by Somerset County Council, the policies contained in the existing Local Plans have in principle been 'saved' (kept) from September 2004, which is when the new Planning and Compulsory Purchase Act came into force. Policies in the Minerals and Waste Local Plans were saved for three years from adoption. Subsequently, the Secretary of State issued a Direction on 20 September 2007 to save the majority of the policies contained in the Somerset Minerals Local Plan. A schedule of the Minerals Local Plan policies now saved can be obtained via the Minerals and Waste Policy team: [www.somerset.gov.uk/mineralsandwaste](http://www.somerset.gov.uk/mineralsandwaste)

A similar Saving Direction was not issued by the Secretary of State prior to the passing of the three year expiry date of the Somerset Waste Local Plan. Consequently the policies in Somerset County Council's Waste Local Plan no longer have the status of statutory plan policies as they are not "saved" policies under the Planning & Compulsory Purchase Act 2004.

The Waste Local Plan covered a period of 10 years, from 2001 to 2011. Some of the policies remain up to date and relevant. Other policies no longer reflect Government guidance and policy on waste planning. Whilst the Waste Local Plan is no longer a statutory plan and is not a part of the development plan for the purposes of making decisions on planning applications, the status of the policies which remain up to date is that they should be taken into account as material planning considerations of significant weight. Decisions should be taken in accordance with development plan policies which are part of current plan documents and consideration should then be given to the relevant policies of the 2005 Plan as material considerations.

# Building a strong evidence base

Local Planning Authorities must ensure that their Core Strategies are supported by evidence of what physical and social infrastructure is needed to enable the amount of development proposed for the area.

Consequently, underlying the MWDF is a range of documents that comprise the evidence base on which policy decisions have been made. Major supporting documents are listed in the evidence base table below.

<b>Major documents in the evidence base</b>
Somerset County Council Waste Local Plan (Adopted February 2005)
Somerset County Council Mineral Local Plan (Adopted April 2004)
Annual Monitoring survey data
Planning Permission Data (of mineral and waste facilities)
British Geological Data (BGS)
National Planning Policy and Guidance for waste and minerals.
Data from the Environment Agency (particularly on waste matters)
Regional AMR (Annual Monitoring Report) data
Somerset Waste Partnership's Joint Municipal Waste Management Strategy and data collected as part of its review
Strategic Flood Risk Assessments
Appropriate Assessments (Habitats Regulation Assessment)
Sustainability assessments & Strategic Environmental Assessments
Draft Regional Spatial Strategy (until 06 July 2010).
The Regional Waste Strategy for the South West 2004 – 2020
Various technical reports prepared or commissioned by Somerset County Council, ranging from a commercial and industrial waste survey to a review of waste management capacity in Somerset.

The table above includes documents that identify any potential environmental or other impacts arising from delivery of the MWDF. Somerset County Council has so far undertaken work on Strategic Flood Risk Assessment, Sustainability Appraisal / Strategic Environmental Assessment (SA/SEA) and various other technical studies.

According to the Planning Inspectorate, Development Plan Documents should be founded on a robust and credible evidence base, involving evidence of participation of the local community and others having a stake in the area, and research/fact finding (meaning that the choices made are backed up by the facts).

The MWDF evidence base will be updated as it progresses toward completion.

# Project management

The Minerals and Waste Development Framework documents will be largely prepared by the retained County Council staff in the Waste and Policy team. The costs for this work will thus be met from Somerset County Council's existing budget. At the time of writing this Scheme, the Minerals and Waste Policy team consists of:

- Minerals policy manager (part time)
- Minerals project officer (full time)
- Waste policy manager (full time)
- Waste policy officer (full time)
- Internal technical, financial and administrative support as necessary.

The County Council's Head of Service, Environmental Management and Regeneration, provides senior management support and professional guidance in relation to the Minerals and Waste LDF work, leading a Project Board that supports the timely delivery of the project and helps to ensure that its outputs reflect the needs of its users.

Selected tasks may require external expertise; for example, flood risk assessments. Such additional support will be brought in as needed.

There will also be costs associated with undertaking consultations with stakeholders (those with an interest in either subject) and the required Examination in Public (EiP). The costs for consultation and EiP will need to be reviewed on an annual basis and the allocation of funds for these will take place through the County Council's annual budgeting process.

The Minerals and Waste Policy team works with the Minerals and Waste Task Group, which consists of a group of selected Elected Members (Councillors) who provide a view on how the work is progressing. They also hear the background evidence to the decisions made and endorse these if they see fit.

Relevant Cabinet Members, Cabinet and Full Council make decisions on specific MWDF issues throughout the lifetime of the project, informed by dialogue with the Minerals and Waste Task Group. A scrutiny committee is in place to scrutinise decisions taken by Cabinet Member and Cabinet as appropriate and provide their views before any recommendations are made to Full Council.

The Planning Policy Guidance 12 (available from [www.opsi.gov.uk](http://www.opsi.gov.uk)) recommends the use of project management techniques to help the production of the Minerals and Waste Development Framework documents.

Somerset County Council adheres to the principles of the PRINCE II project management technique; by using this project approach it seeks to maximise the probability that the documents will be delivered (written) on time according to the timetable contained in this document.

## **Constraints of the project**

The progress of the project is constrained by the following factors:

- the project must follow national, regional and local policy and guidance, but remain specific to Somerset;
- the project must conform to the governance procedures followed within Somerset County Council; and
- approvals and announcements must fit into the political schedule of Cabinet and Council meetings.

## **Dependencies**

The key factors which the project is dependant on are as follows:

- the availability of good quality data to compile the evidence base, which will inform important decisions;
- receiving responses (also known as representations) in sufficient numbers and from all parts of the community which will help to guide the decisions made;
- for the Planning Inspectorate (PINS) to provide an Inspector/s to conduct the Examination in Public (EiP) & complete the process; and
- for regional or central Government to inform of the relevant regional or national targets, changes in policy and to provide timely, useful advice.

## **Risks and issues**

As part of the structured project (PRINCE II) approach to producing the Minerals and Waste Development Framework, it is important to identify the risks to the project and associated issues, and how these might affect the delivery of the project. A summary of the identified risks and issues is presented in the table on the next page.

## Risk profile delivery of the MWDS

Risk	Mitigation measures (i.e. the Minerals and Waste Policy team will...)
Changes to national and regional legislation, policy or guidance	Maintain regular contact with relevant central and regional Government departments.
Insufficient internal funding or resources allocated to the project	Develop detailed plans to support the funding requirements of the project.
Change of political will or lack of cross party support	Work to ensure a consistently high profile within the organisation.
Delay in assembling the evidence base which underpins the Mineral & Waste Development Framework	Clearly outline the timetable and obligations to those parties providing data for this purpose.
Delay in delivery of work from external sources (such as consultants)	Set and monitor rigorous deadlines with external sources.
Consultation fatigue – that only a small number of responses are received from our consultations.	Seek advice from Somerset County Councils Communication and Engagement team regarding the best way to elicit views from a diverse section of the community.
Confusion regarding the role of the work of the Waste Policy team and the work of the Somerset Waste Partnership	Work with and take guidance from the SCC Communication and Engagement team and the Somerset Waste Partnership to produce and communicate a clear distinction between the organisations.
Status of the Joint Municipal Waste Management Strategy. (this is the document which outlines how household waste will be dealt with by the Somerset Waste Partnership)	Continue to hold regular meetings with the SWP to keep both parties informed of each other's progress.
Key staff may become unavailable (through leaving, sickness etc)	Ensure all documentation is up to date. Depending on the financial situation this may necessitate employing short-term cover via consultants or contractors.
The European Union is expecting the UK to have detailed waste management plans in place by 2010 in all areas of the country. If this target is not met, there is a possibility of the UK being fined.	SCC will maintain contact with relevant regional and central Government on this issue. It is unclear when fines might be levied, and what format other penalties might take the format of. As such, it is difficult to counteract this at this stage in the process.

# How to get involved

Consultation and engagement with a variety of stakeholders is a vital part of strong policy writing and a re-occurring theme throughout delivery of the MWDF.

To date, the major MWDF consultation phases Somerset County Council has undertaken so far include:

- a consultation on waste planning 'Issues and Options' which informs the preparation of the Waste Core Strategy.
- a consultation on peat issues;
- a consultation on aggregates issues; and
- a consultation on building stone issues is underway.

A consultation on waste management capacity and need, including options for strategic waste sites, is planned for early 2011.

If you would like to be added to the Minerals and Waste Policy Team consultation database to be informed of future information or consultations, then please contact;

Minerals and Waste Policy Team  
Environment Directorate  
County Hall  
Taunton  
Somerset  
TA1 4DY

☎: 0845 345 9188

✉: [mineralsandwaste@somerset.gov.uk](mailto:mineralsandwaste@somerset.gov.uk)

You can also find this document and more information on the work of the Minerals and Waste Policy Team at [www.somerset.gov.uk/mineralsandwaste](http://www.somerset.gov.uk/mineralsandwaste)

# Profile of framework documents

## Statement of Community Involvement (SCI)

<b>Description</b>	<p>This document describes the way the Mineral and Waste Policy Team will engage and consult with the community during the preparation of the Minerals and Waste Development Framework.</p> <p>The document seeks to identify the different stakeholder (those that have an interest in mineral or waste matters) groups. It outlines what steps will be taken to try and inform as many as possible of the developments being made in the production of the documents so they can get involved and influence the policy being developed by expressing their views.</p>
<b>Type</b>	Non development plan document
<b>Geographic coverage</b>	Administrative area of Somerset (not including Exmoor National Park).
<b>Conformity</b>	The SCI must meet the requirement laid out in Planning Policy 12 (PPS 12). It must also meet the requirements made by the corporate communication protocol for Somerset County Council.
<b>Project leads</b>	<p>Head of Environmental Management and Regeneration</p> <p>Group Manager - Environmental Resources</p>
<b>Political direction</b>	Cabinet Member for Environment
<b>Stakeholders</b>	<ul style="list-style-type: none"> <li>• Parish councils in Somerset (327)</li> <li>• Neighbouring authorities</li> <li>• Public services &amp; agencies (such as Environment Agency)</li> <li>• Mineral industries &amp; interest groups</li> <li>• Waste industries &amp; interest groups</li> <li>• District and Borough Councils in Somerset</li> <li>• Somerset Strategic Partnership</li> </ul>
<b>Engagement and consultation</b>	Available on website now approved



## Minerals Core Strategy DPD

<b>Description</b>	<p>This document will replace the Mineral Local Plan adopted in April 2004.</p> <p>It will set out the vision, objectives and delivery for sustainable mineral development in Somerset. It will detail key policy taking local, regional and national requirements into account, whilst acknowledging detailed environmental, social, amenity and economic factors.</p> <p>Ultimately it will also detail strategic sites for mineral development. This means those sites essential to the delivery of the strategy.</p>
<b>Type</b>	Development plan document
<b>Geographic coverage</b>	Administrative area of Somerset (not including Exmoor National Park).
<b>Conformity</b>	With national guidance.
<b>Project leads</b>	<p>Head of Environmental Management and Regeneration.</p> <p>Group Manager - Environmental Resources</p>
<b>Political direction</b>	Cabinet Member for Environment
<b>Stakeholders</b>	<ul style="list-style-type: none"> <li>• Parish councils in Somerset (327)</li> <li>• Neighbouring authorities</li> <li>• Public services &amp; agencies (such as Environment Agency)</li> <li>• Mineral industries &amp; interest groups</li> <li>• Waste industries &amp; interest groups</li> <li>• District and Borough Councils in Somerset</li> <li>• Somerset Strategic Partnership</li> </ul>
<b>Engagement and consultation</b>	Stakeholders to be involved according to the SCI. Available on website, via Somerset libraries and County Council offices once adopted.
<b>Production timetable</b>	<b>Dates</b>
Regulation 25 (continuous engagement)	Ongoing
Regulation 27 (pre submission)	January 2012
Regulation 30 (submission)	May 2012
Pre examination	June 2012
Examination in Public	October 2012
Adoption	Mid 2013

## Waste Core Strategy DPD

<b>Description</b>	<p>Sets out the vision, objectives and spatial strategy for Somerset until 2028, and how these will be delivered. This document will replace the Waste Local Plan, adopted in February 2005.</p> <p>It will detail key policies for sustainable waste management which seek to provide adequate waste management capacity (enough facilities) to deal with the amount of waste which will be produced. This needs to take into account where these facilities will be located, along with environmental, social and economic implications.</p> <p>It will identify areas of search including potential sites for strategic waste management facilities. Strategic facilities will be critical to the delivery of the strategy and are likely to require long term investment (see Planning Policy Statement 12 for more information).</p>	
<b>Type</b>	Development Plan Document.	
<b>Geographic coverage</b>	Administrative area of Somerset (not including Exmoor National Park).	
<b>Conformity</b>	With national guidance. Also taking heed of other local authority Local Development Documents.	
<b>Project leads</b>	<p>Head of Environmental Management and Regeneration.</p> <p>Group Manager - Environmental Resources</p>	
<b>Political direction</b>	Cabinet Member for Environment	
<b>Stakeholders</b>	<ul style="list-style-type: none"> <li>• Parish councils in Somerset (327)</li> <li>• Neighbouring authorities</li> <li>• Public services &amp; agencies (such as Environment Agency)</li> <li>• Mineral industries &amp; interest groups</li> <li>• Waste industries &amp; interest groups</li> <li>• District and Borough Councils in Somerset</li> <li>• Somerset Strategic Partnership</li> </ul>	
<b>Engagement and consultation</b>	Stakeholders to be involved according to the SCI. Available on website, via Somerset libraries and County Council offices once adopted.	
<b>Production timetable</b>	<b>Dates</b>	
Regulation 25 (continuous engagement)	Ongoing	
Regulation 27 (pre submission)	August 2011	
Regulation 30 (submission)	December 2011	
Pre examination	February 2012	
Examination in Public	May 2012	
Adoption	Autumn 2012	

## Waste Site Allocations DPD

<b>Description</b>	Waste Site Allocations Document will identify any other preferred site for waste processing during the plan period. This document will need be developed in accordance with the Waste Core Strategy.	
<b>Type</b>	Development Plan Document	
<b>Geographic coverage</b>	Administrative area of Somerset (not including Exmoor National Park).	
<b>Conformity</b>	With Waste Core Strategy	
<b>Project leads</b>	Head of Environmental Management and Regeneration.  Group Manager - Environmental Resources	
<b>Political direction</b>	Cabinet Member for Environment	
<b>Stakeholders</b>	<ul style="list-style-type: none"> <li>• Parish councils in Somerset (327)</li> <li>• Neighbouring authorities</li> <li>• Public services &amp; agencies (such as Environment Agency)</li> <li>• Mineral industries &amp; interest groups</li> <li>• Waste industries &amp; interest groups</li> <li>• District and Borough Councils in Somerset</li> <li>• Somerset Strategic Partnership</li> </ul>	
<b>Engagement and consultation</b>	Stakeholders to be involved according to the SCI. Available on website, via Somerset libraries and County Council offices once adopted.	
<b>Production timetable</b>	<b>Dates</b>	
Regulation 27 (pre submission)	Mid 2013	
Regulation 30 (submission)	Late 2013	
Adoption	2014	

## Annual Monitoring Report (AMR)

<b>Description</b>	The Annual Monitoring Report, which is published every year, provides a review of progress against the Mineral and Waste Development Scheme, a snapshot (survey) of minerals and waste data and effectiveness (how many times used) of development management policies.
<b>Type</b>	Non development plan document
<b>Geographic coverage</b>	Administrative area of Somerset (not including Exmoor National Park).
<b>Conformity</b>	With national guidance.
<b>Project lead</b>	Head of Environmental Management and Regeneration.  Group Manager - Environmental Resources
<b>Political direction</b>	Cabinet Member for Environment
<b>Resources (internal)</b>	Waste Policy Manager, Minerals Policy Manager, + administrative support
<b>Financial resources</b>	Within existing work plan for team
<b>External resources</b>	None
<b>Stakeholders</b>	All
<b>Engagement and consultation</b>	Available on website once approved
<b>Stage</b>	<b>Dates</b>
Annual data gathering, production and publication (once approval from Government office has been obtained)	By December of each year the AMR is due for submission to central Government. To date this has been managed via the Government Office for the South West (GOSW).

# Stakeholders

## External

- Adjoining authorities
- Campaign to Protect Rural England
- Department for Communities and Local Government
- Department for Environment, Food and Rural Affairs
- Department of Energy and Climate Change
- District & Borough Councils in Somerset
- English Heritage
- Environment Agency
- Government Office for the South West
- Natural England
- Parish Councils in Somerset
- Planning Inspectorate
- Regional Technical Advisory Body (currently mothballed)
- Regional Aggregates Working Party (South West)
- Somerset Strategic Partnership (the LSP for Somerset)
- Somerset Strategic Planning Conference
- Somerset Minerals Forum
- Somerset Peat Producers Association
- Somerset Wildlife Trust
- South West Councils (formerly the Regional Assembly for the SW)

## Internal

- Strategic planning
- Transport planning
- Regulatory services
- Communications and engagement team
- Environment Finance
- Somerset Waste Partnership

NB: this section is not intended to provide a comprehensive listing of all stakeholders with an interest in the MWDF, but is intended to highlight some of the main partners that Somerset County Council will be working with in delivery of its MWDF.

# Accessibility

This document is also available in Braille, large print, on tape and on disc and we can translate it into different languages. We can provide a member of staff to discuss the details.

## Arabic

يتوفر هذا المستند أيضاً بطريقة برايل، بالطباعة الكبيرة، على شرائط أو على أقراص كما يمكن ترجمته إلى اللغة العربية.

## Bengali

এই দলিলটি ব্রেইলে, মোটা হরফে, টেইপ-ক্যাসেটে এবং ডিস্কে পাওয়া যায় এবং **ensji** (Bengali) ভাষায়ও এটি অনুবাদ করে দেয়া যাবে।

## Cantonese

這份資料另有盲文版、大字體版、錄音磁帶或光碟，並且可以翻譯成繁體中文。

## Portuguese

Estes documentos também se encontram disponíveis em Braille, letras grandes, fita ou disco e podem ser traduzidos para Português.

## Polish

Ten dokument jest także dostępny w wersji Braille'a, pisany dużym drukiem, na kasecie lub dysku kompaktowym i może być przetłumaczony na język polski.

## Spanish

Estos documentos también se consiguen en braille, letra grande, cinta o disco, y se pueden traducir al español.

## Tagalog

Ang dokumentong ito ay may bersiyong naka-Braille, malalaki ang mga letra, naka tape o disk. Maaari kaming magbigay ng ibang pagsasalin kung kailangan.

## Turkish

Bu döküman körlerin alfabesinde, büyük yazılarla, teypte ve disklerde de mevcuttur. Ayrıca **Türkçe**'ye de tercüme edilebilir.



'Working together for equalities'



This document has been prepared by Somerset County Council.

© Somerset County Council

Cover photographs copyright:  
Photographs show:

Somerset County Council  
Highbridge Household Waste Recycling Centre (top)  
Batscombe Quarry (bottom)

Copies of this document are available from:

Somerset County Council  
Environment Directorate  
County Hall  
Taunton  
Somerset  
TA1 4DY  
Tel: 0845 345 9188  
Email: [mineralsandwaste@somerset.gov.uk](mailto:mineralsandwaste@somerset.gov.uk)

Text is available in large format on request

For further details of the Somerset Minerals and Waste Development Framework, and to view and download this and other documents, please visit our website.

[www.somerset.gov.uk/mineralsandwaste](http://www.somerset.gov.uk/mineralsandwaste)

